

How to Connect via Tablet/Phone

To connect your device to a Display screen or Projector using a Solstice pod, your mobile device (laptop, tablet or phone) will need to be connected to the **EDUROAM** Wi-Fi.

Switch on the Display screen or Projector

On the AV control panel in Solstice enabled rooms, the Solstice pod is labelled as **WIRELESS**.

Press the **WIRELESS** input to select the Solstice pod.

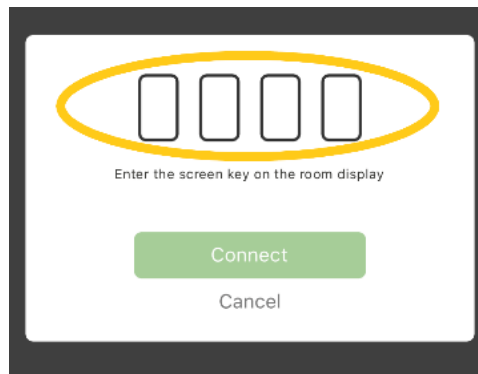


Install the Solstice App

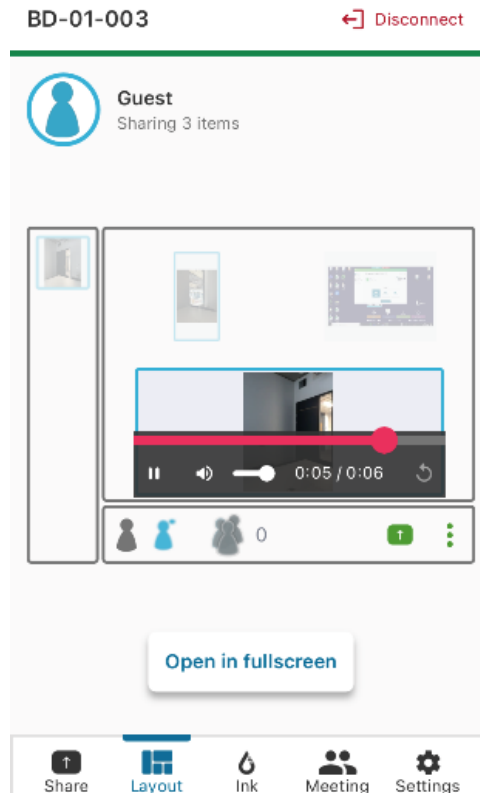
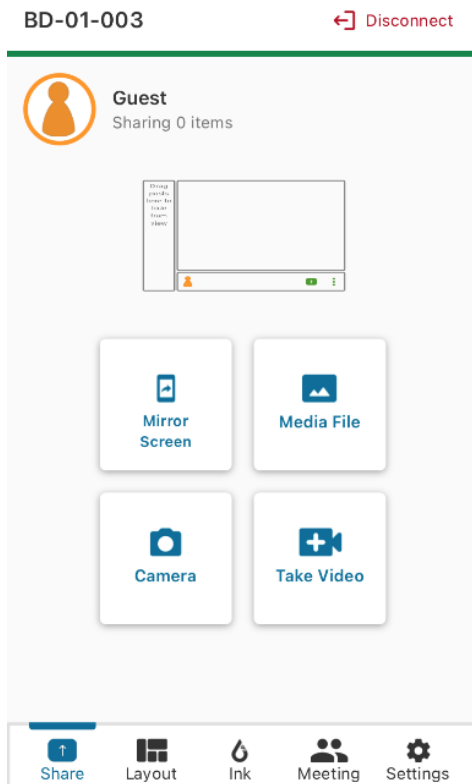
- **Apple iOS** users: please search for 'Mersive Solstice' in the App Store and install the Solstice app.
- **Android** users: please search for 'Mersive Solstice' in the Google Play Store and install the Solstice app.
- Alternatively, download links Solstice Clients can be found here: www.mersive.com/download
- Once installed, navigate to the 'Solstice' app on your device and tap to open.
- Click the 'Quick connect' bar and enter the IP address of the Display screen you wish to connect to. (The IP address is displayed on the top right of the display screen, example 192.168.36.**)



- When prompted for a screen key, enter the **4-digit key** displayed on the Display screen.



- You are now connected to the Display screen or projector via the Solstice pod.
- The Share screen appears which allows you to select:
 - **Mirror Screen:** mirrors the entire screen of your device.
 - **Media File:** allows upload of a picture, video or audio file for playback.
 - **Camera:** allows you to take a photo and send to Display screen or projector.
 - **Take Video:** allows recording of a video and sends it to the Display screen or Projector.
 - **Control video:** pressing the icon on the bottom left of the video window allows you to control audio, playback and loop of the video.



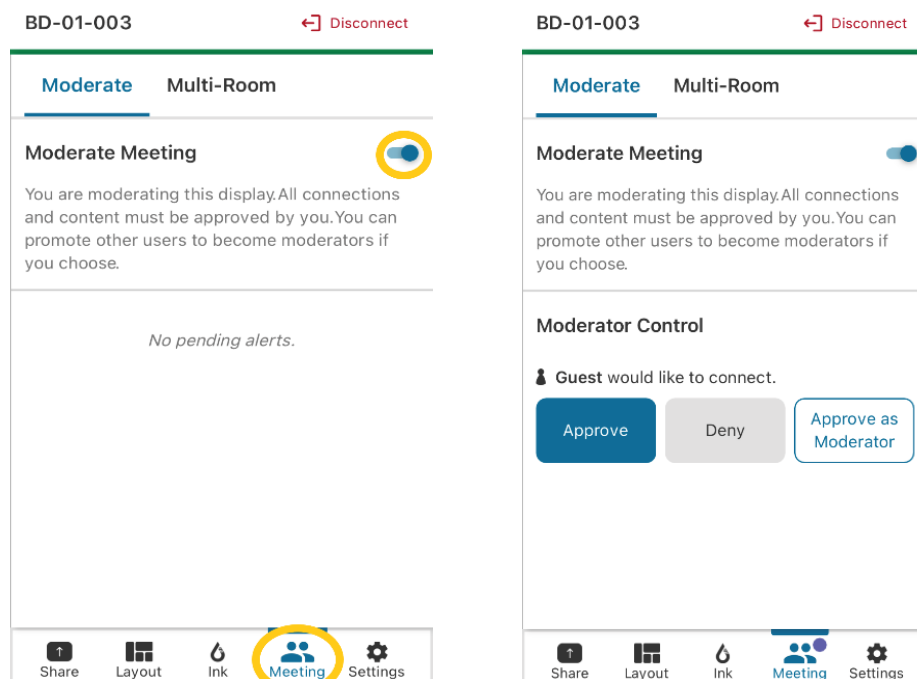
How to Moderate the session

Moderator mode allows you to control:

- who can collaborate
- what content is posted on screen
- layout of the content

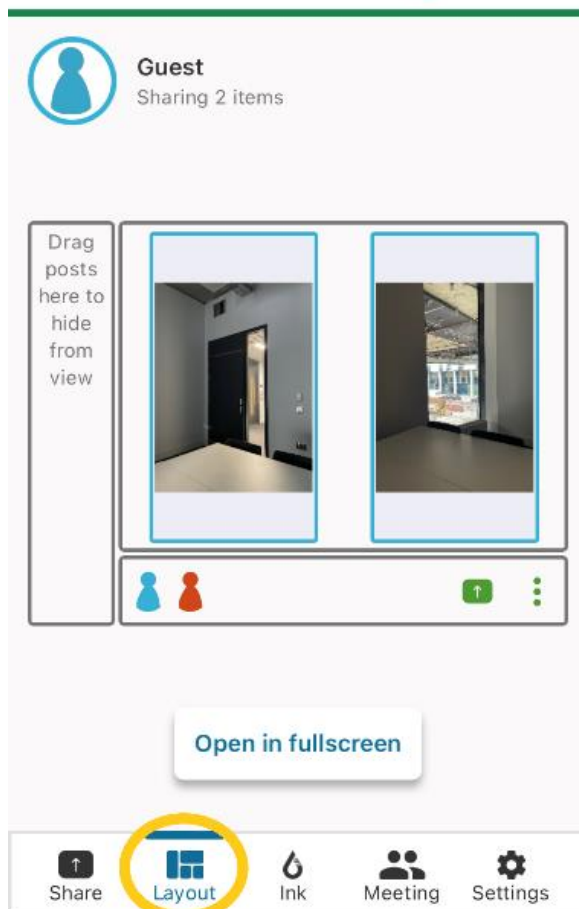
Note - You must be the first person connected to a Solstice pod in order to be the session moderator.

- To enable moderator mode, select “Meeting” on the bottom bar.
- Once selected click the toggle slider to an “on” position.
- Once moderator mode is enabled, any potential collaborators will request to join and must wait for a session moderator to approve the request.

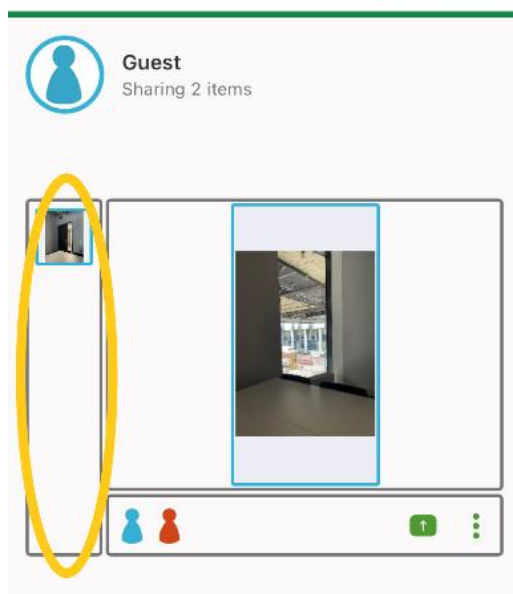


Sharing Tips

- Up to 4 people can share content at a time.
- Content shared from your device appears in the **Layout** window of the Solstice App. Access the Layout window by tapping the Layout icon or the Layout preview.

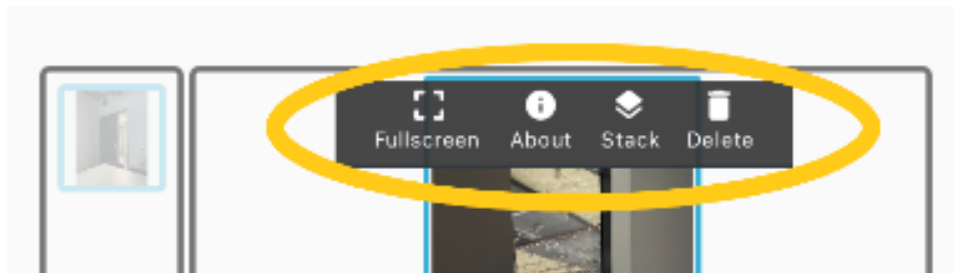


- Click and drag items within the layout window to move items around on the Projector or Display screen.
- Drag items to the “dock” on the left of the layout window to temporarily hide. Drag hidden items back out of the dock to display again. again.



If you long press an item you have shared, a menu appears which allows you to:

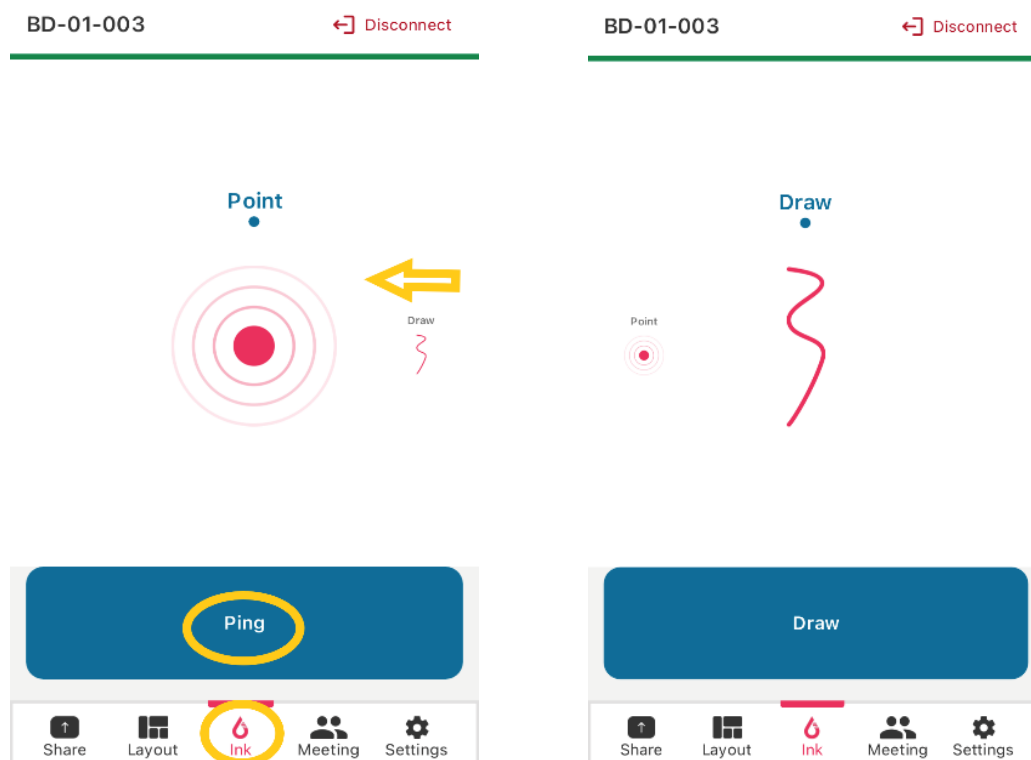
- Fullscreen: maximise selected item on screen and minimises others.
- Stack: create a stack of items that you can flip through.
- Delete: delete the item from the display.



Ink

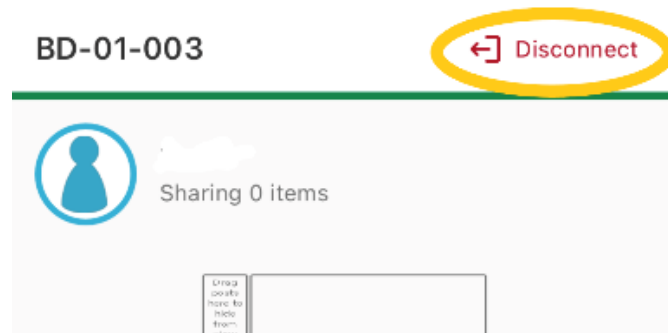
This feature allows a mobile device to be used as a pointer or annotator. To access “Ink”:

- Select “Ink” from the bottom bar.
- Once selected your mobile device instantly becomes a pointer.
- To make your pointer flash hold down the blue “Ping” button.
- To use your mobile device to draw on shared content, flick left on the “Point” screen and you can then use your device to “Draw” by holding down the blue “Draw” button.
- To revert to a pointer flick right on the screen.



How to Disconnect

Remember to “Disconnect” from the Solstice pod once you have finished sharing content. Failure to do so, will leave your content on screen when the next class arrives and will cause disruption.



How to obtain help

For further information, training requests and support, please [contact the Digital Services IT Service Desk](#).