



*Preparing the graduate
workforce of today*

Louise Farrar
UK Student Recruitment Lead

Introduction



Louise Farrar

Head of Student Recruitment, UK

Leeds based

16 years with PwC

Leads team of 65

School, undergraduate, graduate recruitment

PwC's position in the recruitment market

Number **1** in *The Times Top*

100 Graduate Employers survey for a record-breaking **13 years.**

We've been named as one of *The Times Top 50 Employers* for Women for the last **six** years in a row.

'PwC regains its title as the world's biggest firm' Global revenues climbed by 10% to **£23.4bn.**

1,900 graduates and school and college leavers joined us in 2015. And over **900** joined on a work experience programme.

Audit **38%** of the **FTSE 100**

240,000 students around the world have ranked PwC the **number 1** professional services network of firms globally.

We're the UK's Graduate Employer of Choice for **Consulting** according to *The Times*.

We won the 'Most inclusive employer of the year' award at the European **Diversity Awards**, celebrating organisations with a track record in promoting equality and diversity.

Agenda

- Changes to the Student Recruitment landscape
- Responding to change
- PwC's recruitment strategy
- Opportunities during university
- Assessing the future workforce
- Preparing the graduate now
- Q&A
- Close

Student recruitment, changing landscape

The future is no longer certain!

Enormous uncertainty = enormous possibility!

New thinking to deal with uncertainty – courage, creativity, resilience.

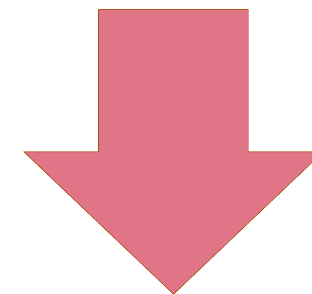
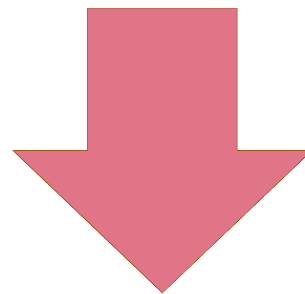
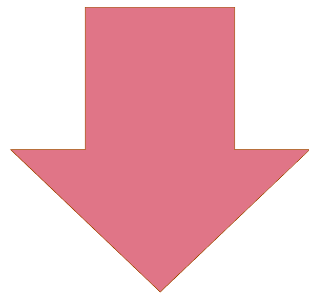
PwC's talent proposition

High Potential School Leavers

***School Leaver
Programmes/Apprenticeships***

Traditional Degree

***Employer Led
Degree – Flying***



Long term career with PwC

In 2016/17 we recruited...

*UK's largest
recruiter of
graduates and
undergraduates*

800
*work
experience &
internships*

1,500
*graduate
jobs*

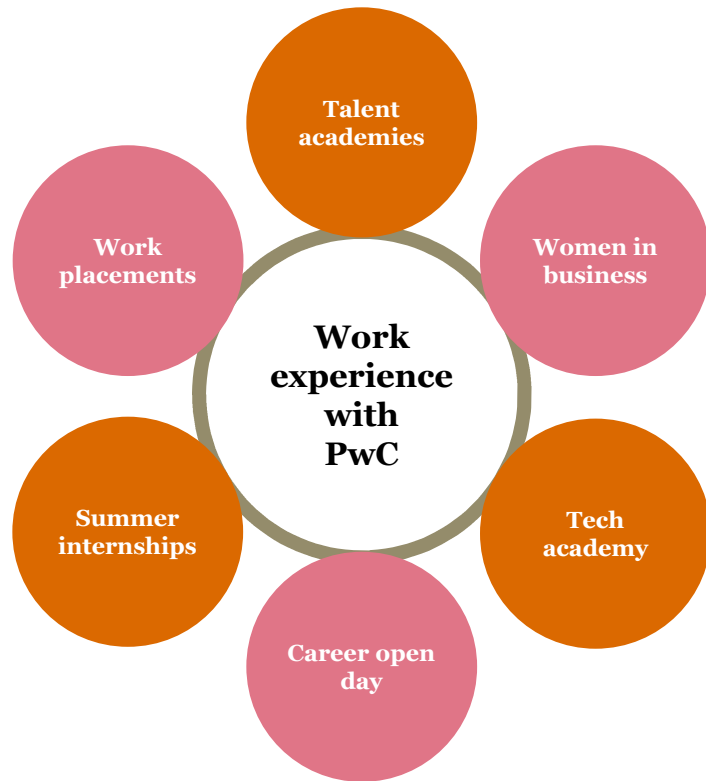
10,000
*interns hired
globally*

20,000
*graduates hired
globally*

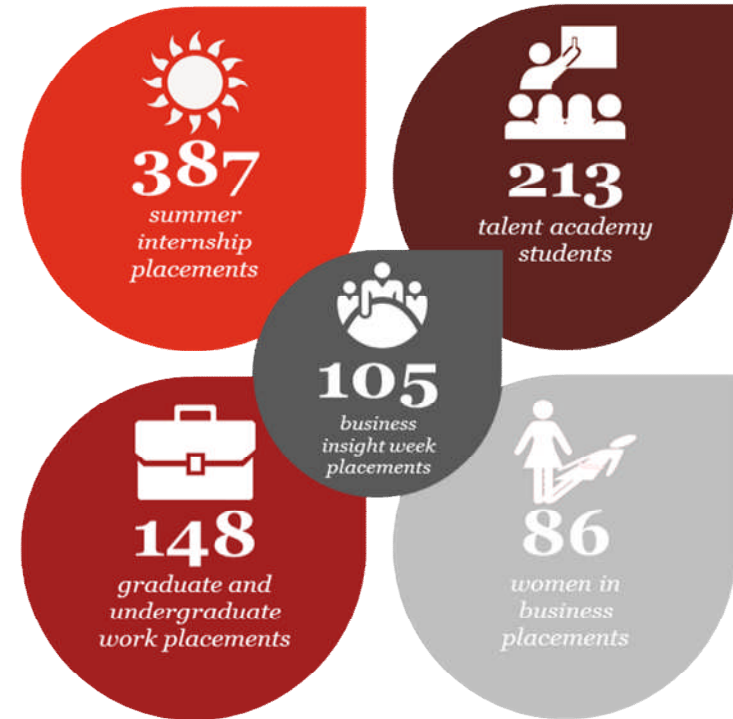
A spotlight on work experience

Why is this a priority for PwC?

Our opportunities



Work experience placements



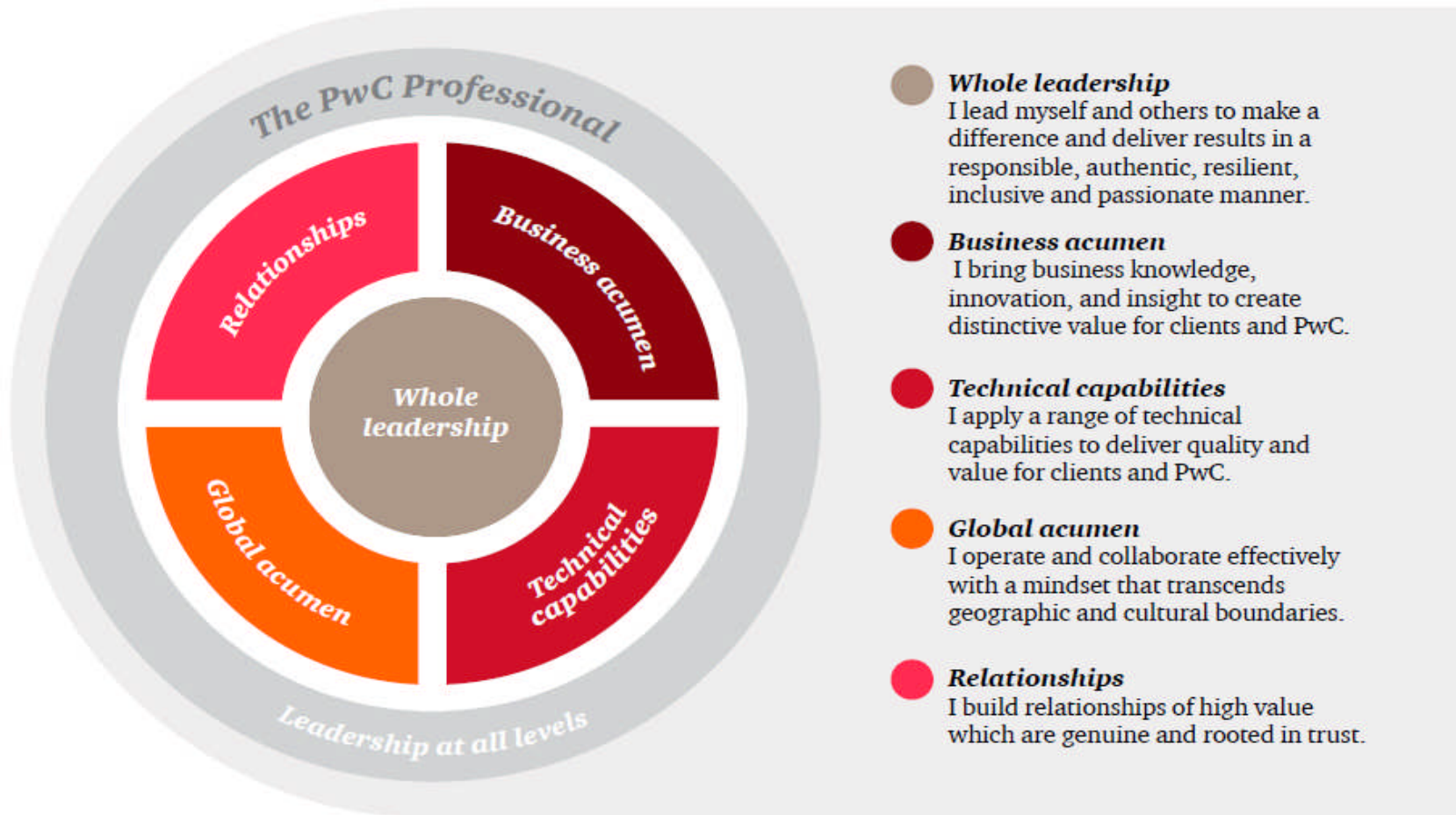
PwC's recruitment process

- 1** *Research*
- 2** *Get online*
- 3** *First interview*
- 4** *Assessment day*
- 5** *Final stage interview*
- 6** *Offer*
- 7** *Pre-employment screening*
- 8** *Before you join*



pwc.com/uk/careers

The PwC Professional

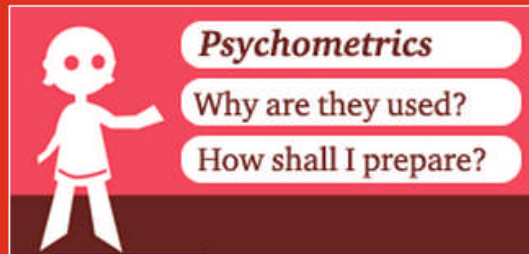


What we offer to prepare students

Psychometric e-learn

Try our e-learn, designed to give you an insight into psychometric assessments and support your preparation

[Click here to launch the e-learn](#)



Interview e-learn

Watch our videos on this interactive e-learn to help you prepare and understand what's involved in an interview

[Click here to launch the e-learn](#)



Brochure

Make the most of your employability skills and build on them

[Download our brochure](#)

Videos

See how your work experience can relate to our business

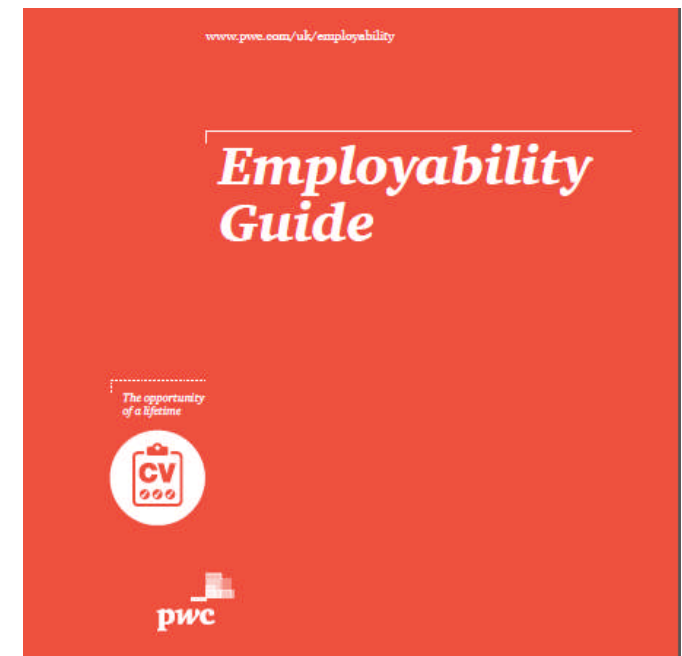
[Click here to watch](#)

Skills we look for

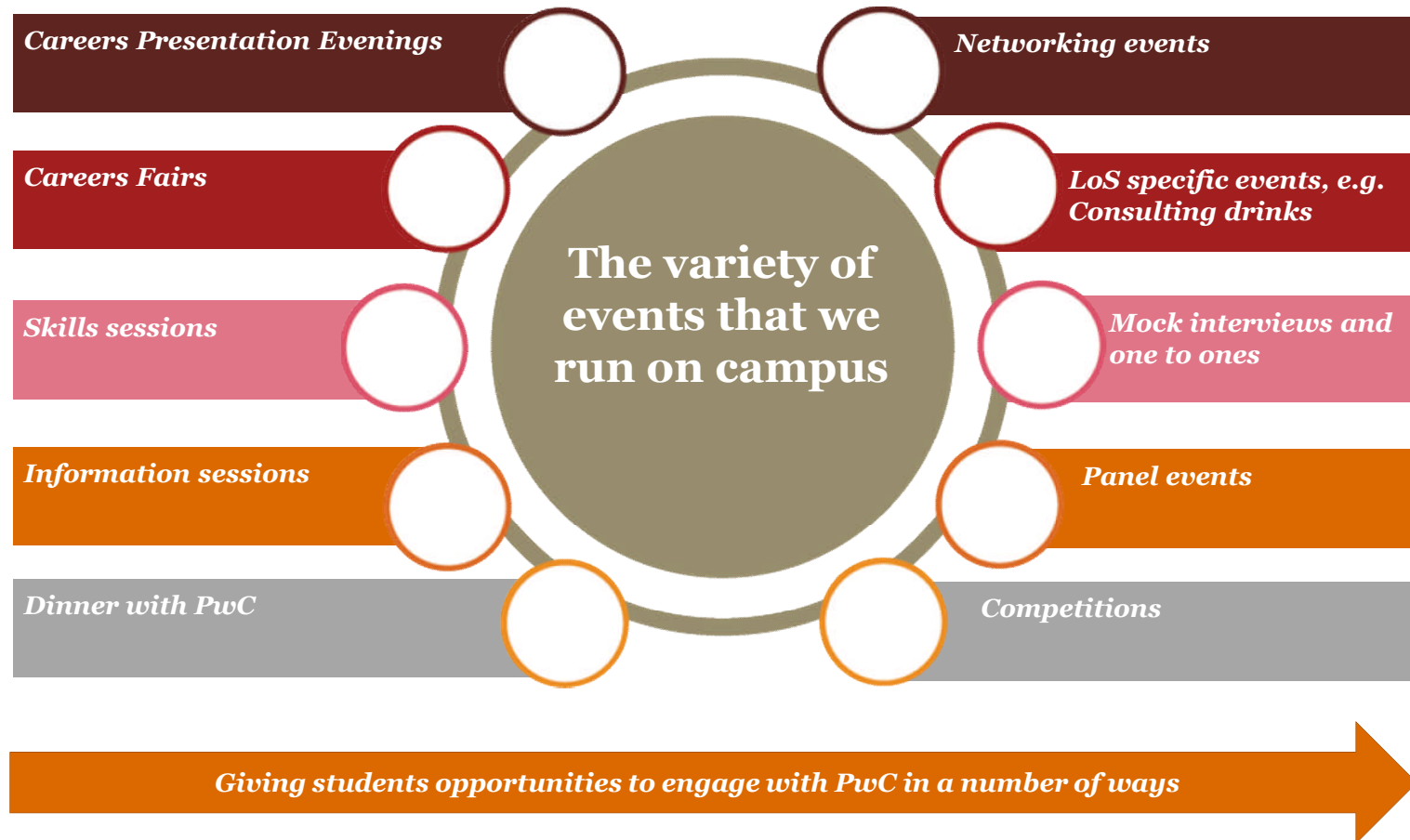
To perform at your best, find out what we'll be looking for

[Click here to read more](#)

www.pwc.com/uk/careers/employability



University engagement



Your role in preparing graduates

- Encouraging students to relate theory to practice – enhance commercial awareness
- Engage at curriculum level
- Encourage work experience – relevant or not
- During academia, work experience/experience tease out skills achieved
- It's never too early to think about career options –sell the benefits...a job in first year of uni!
- Reach out to employers. We are happy to help!
- Profile alumni
- Raise the profile of EDGE