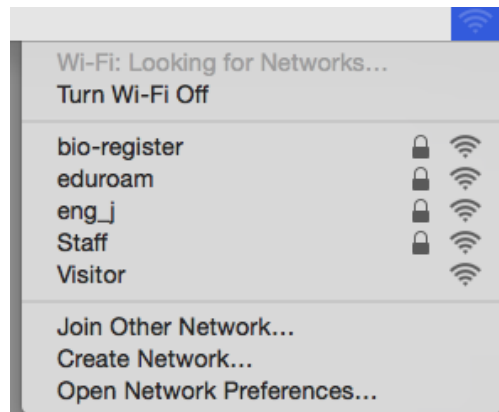
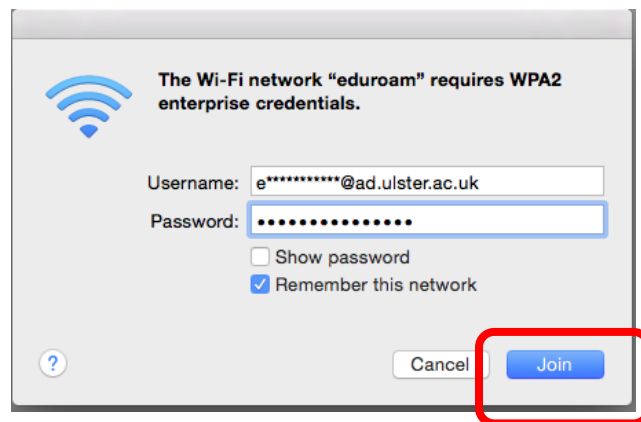


MAC OS Connecting to eduroam (Turn Wi-Fi On)

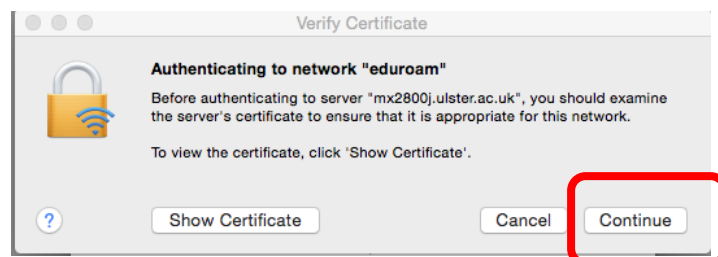
1. Click on the “AirPort” icon on the top right of the main screen.
When you are within range of a valid eduroam network, you should see “eduroam” listed as a preferred network.



1. When prompted enter the Username and Password in the format below:
> Select “JOIN”
Staff: <staff ecode>@ad.ulster.ac.uk
Students: <student bcode>@sd.ulster.ac.uk

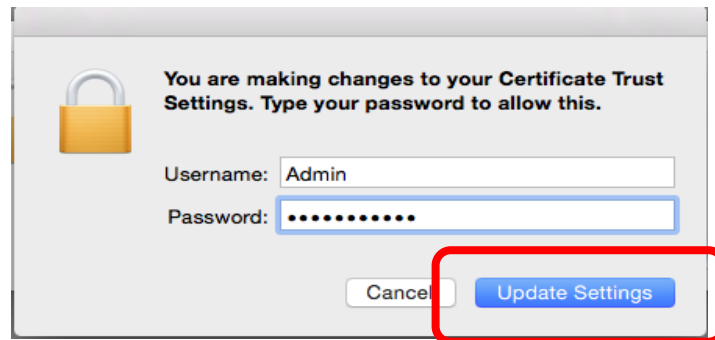


2. You will be asked to verify a certificate >
> Click “Continue”

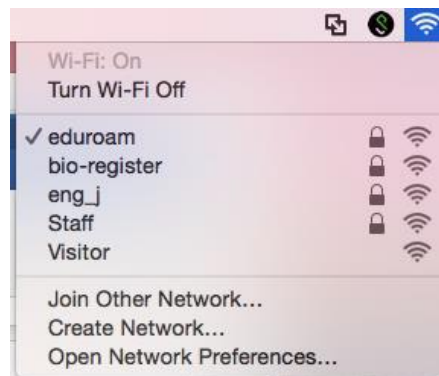


> Note: Certificate required initial set up of “eduroam”

3. Allow changes to your Certificate Trust Settings >
Type your Administrative account details. (Local admin account)
> Select Update Settings



- Check 'AirPort' icon at the top right of the screen >
Wi-Fi connected to "eduroam"



Further Support
Contact:
servicedesk@ulster.ac.uk