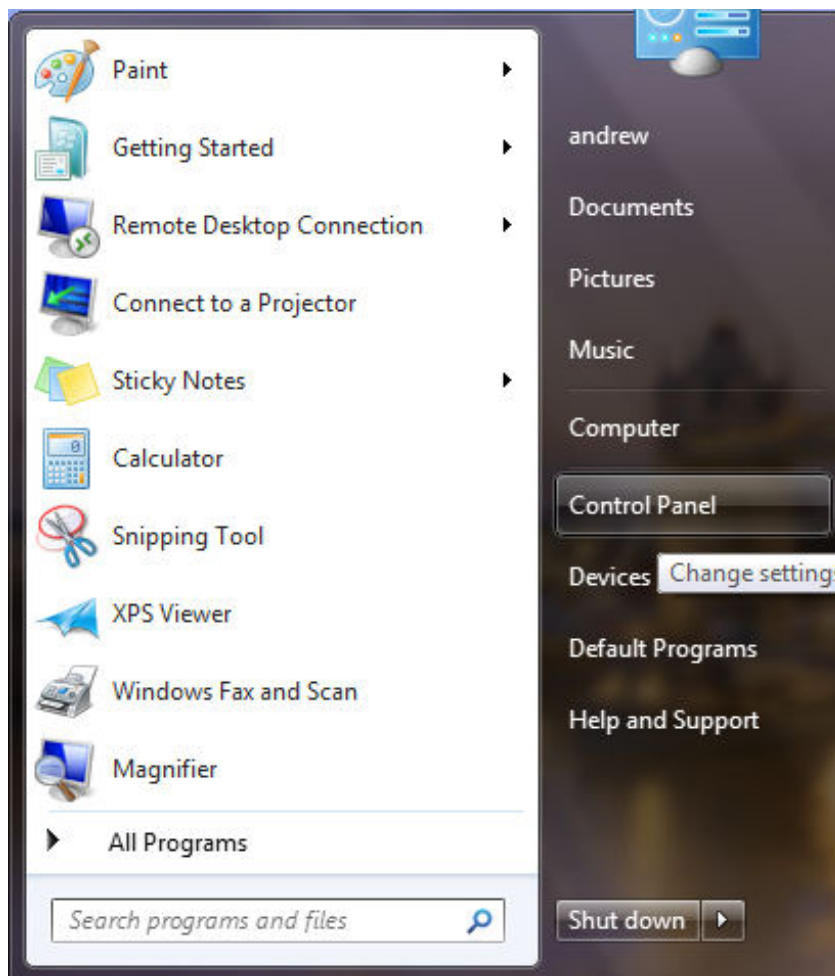


Student and Visitor Wireless network setup for Windows 7 clients.

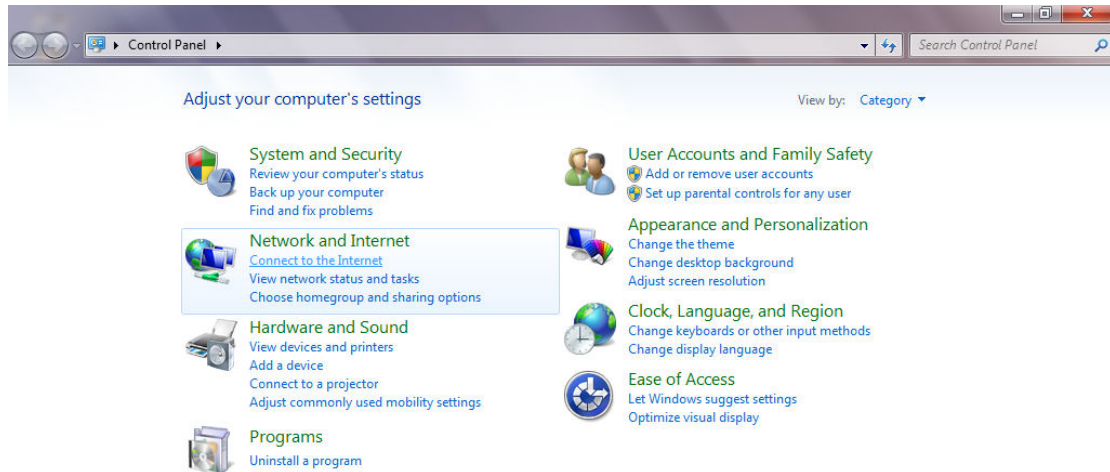
First ensure that your PC is set for DHCP. (See Appendix 1 on the wireless web page for instructions on how to do this.)

In this document, we will describe the setup for access to the Student network. The Visitor set up will be identical, except where we have used **Student** for selecting the wireless network, visitors should substitute the word Student with **Visitor**.

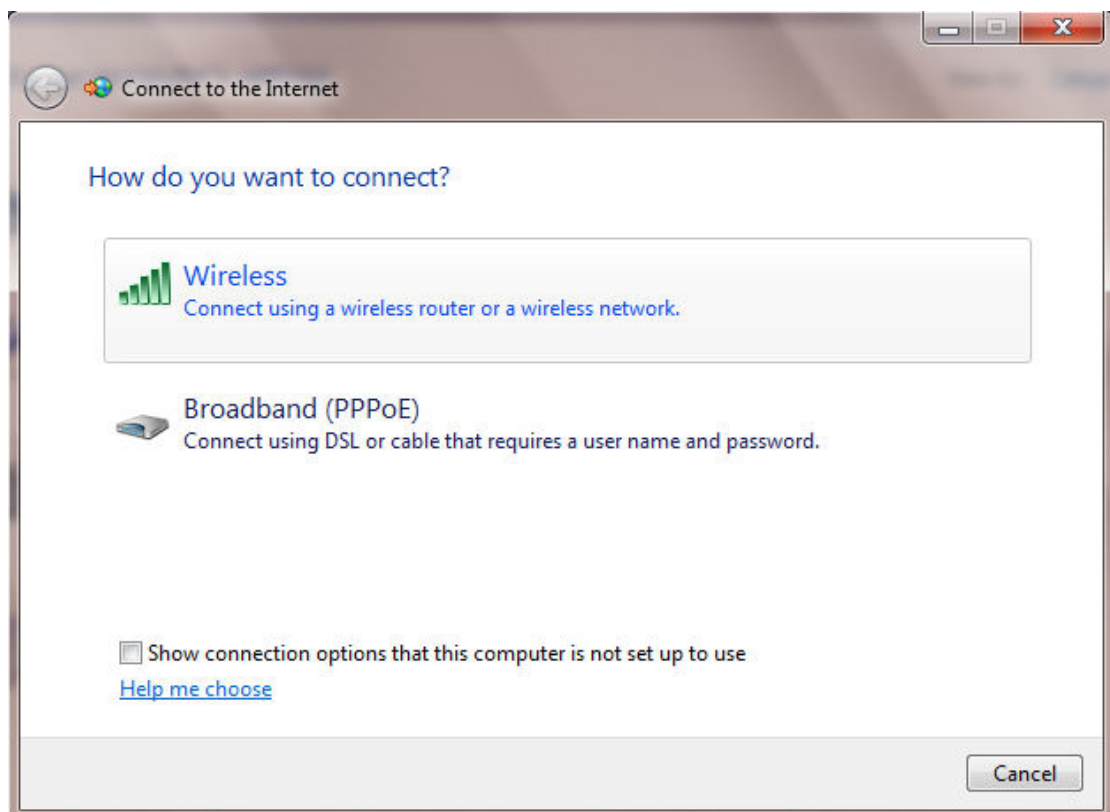
Select *Start* and then *Control Panel*.



Select *Connect to the Internet* from the *Network and Internet* section.



When prompted *How do you want to connect?* Select the *Wireless – Connect using a wireless router or a wireless network* option.

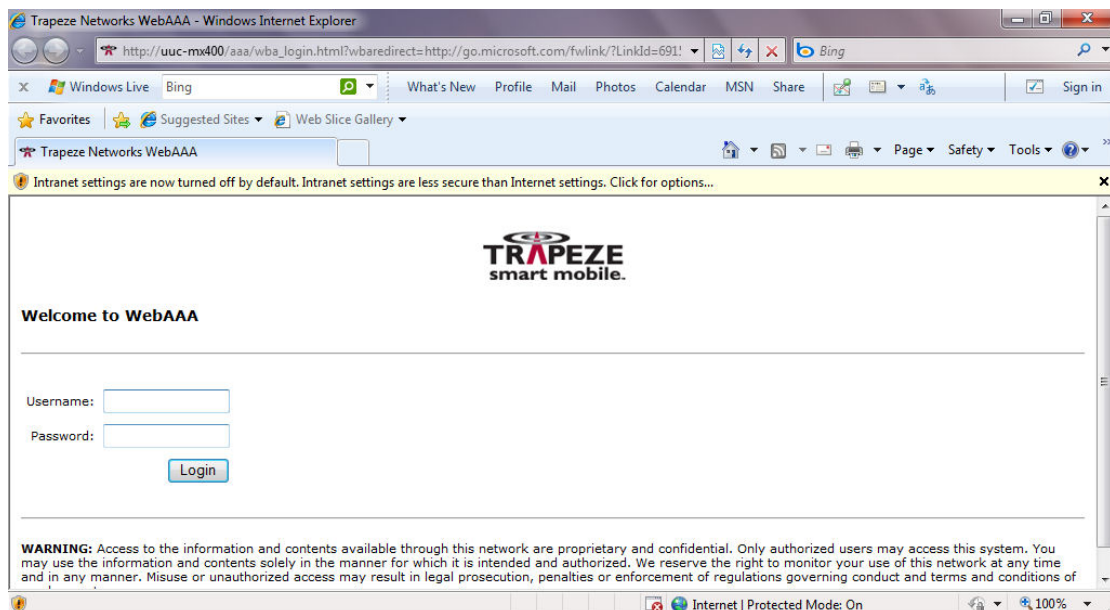


You will then be prompted with a list of the available wireless networks.

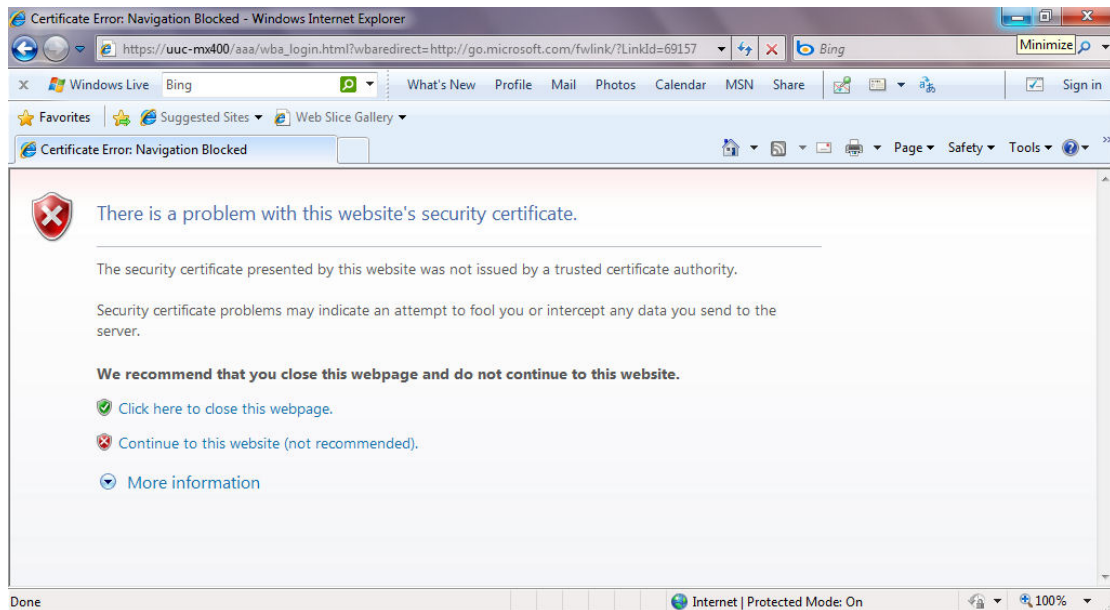
Click on the *Student* SSID (or *Visitor* SSID if you are a visitor), check/select the *Connect automatically* option and then click on the *Connect* button.



Open your web browser. The following web page will open requesting a user name and password. Enter your username (*Student ID* number or *Visitor Code*) and password.



Select *Continue to this website*



At this stage you should get the following webpage. If, after 10 seconds, your web page does not appear, click to refresh your web page.

