

Student or Visitor wireless network setup for Windows XP

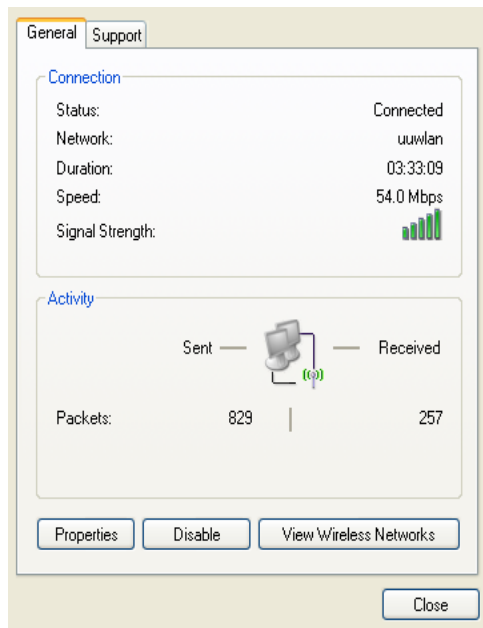
First ensure that your PC is set for DHCP. (See Appendix 1 on the wireless web page for instructions on how to do this.)

In this document, we will describe the setup for access to the **Student** wireless network. The visitor set up will be identical, except where we have used Student for selecting the wireless network, visitors should substitute the word Student with Visitor.

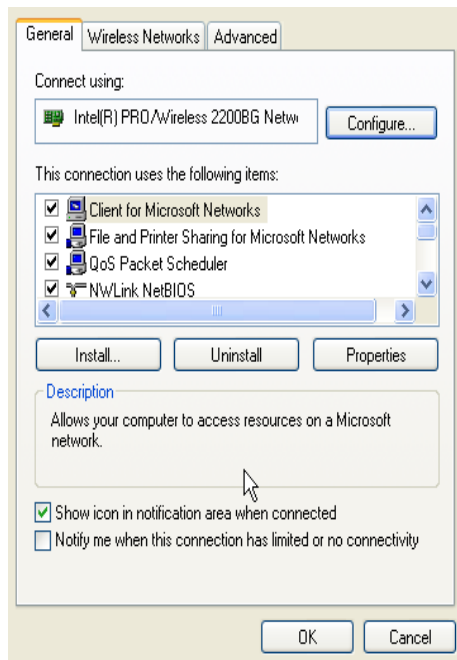
Select *Start* and then *Connect To wireless network connection*.



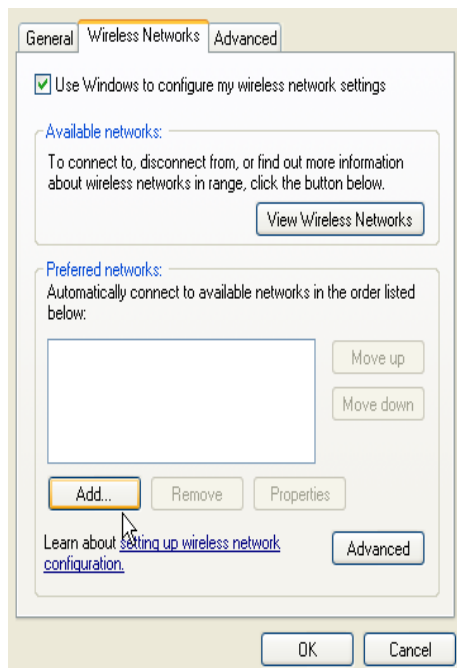
The following window will appear. Click on *Properties*



Select the **Wireless Networks** tab

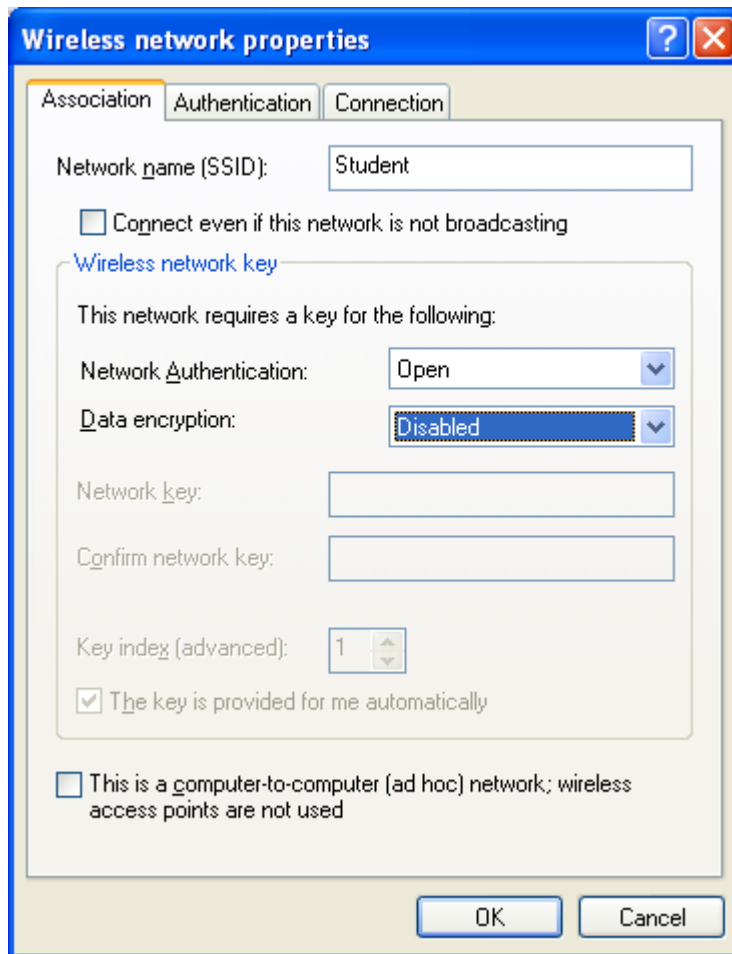


Click on the **Add** button at the bottom of the window.

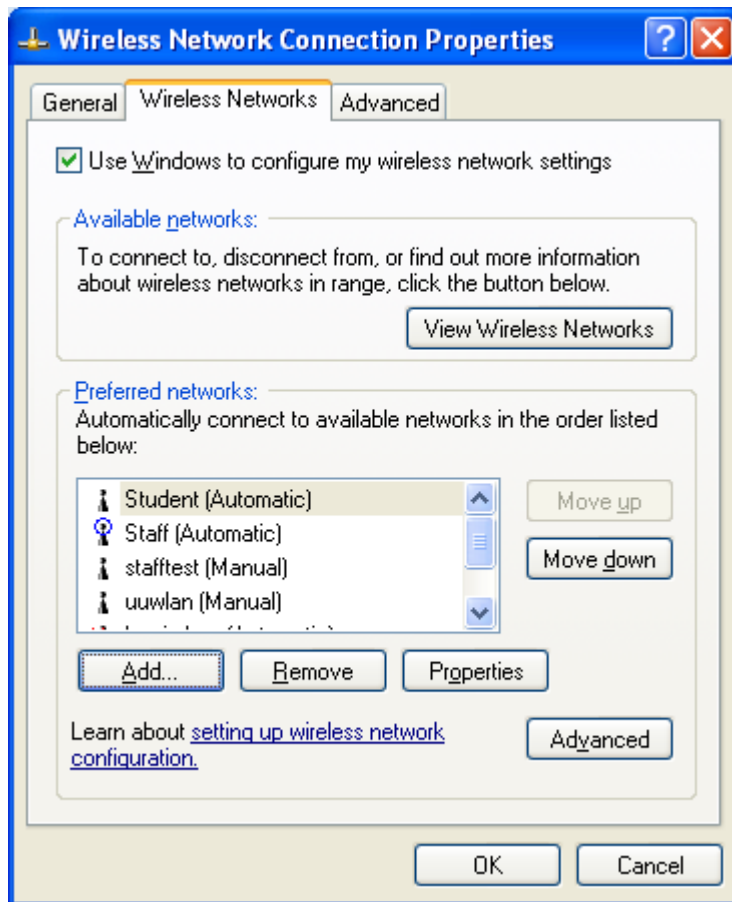


Enter the network name (SSID) *Student* (visitors insert *Visitor*) and use the drop-down menu to change the Data encryption setting to *Disabled*.

Click **OK** to return to the previous window.

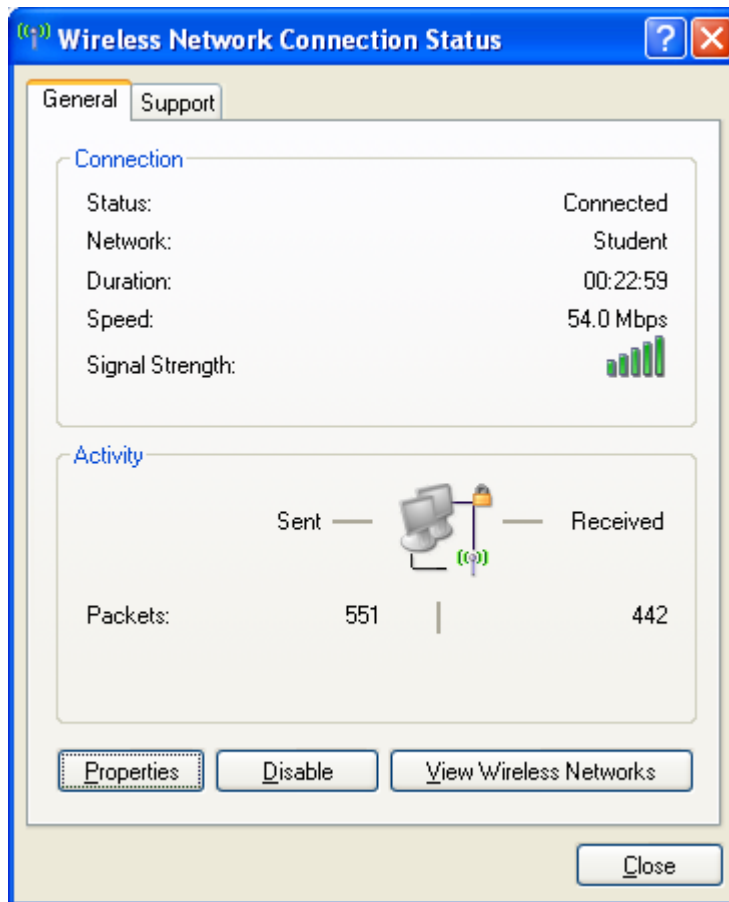


Click **OK** to return and **CLOSE** to close the window.

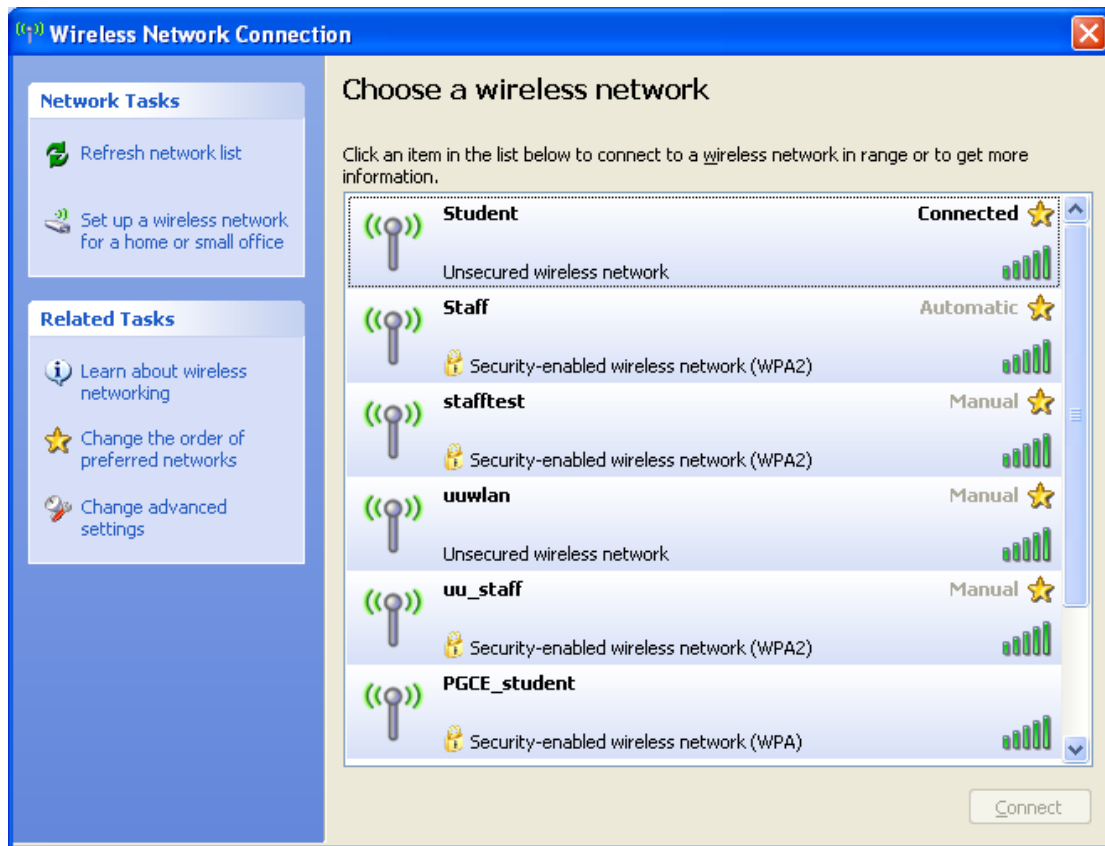


Select *Start* and then *connect to wireless network connection*.

Click *View Wireless Networks*.



Select *Student* window and then click *Connect*.



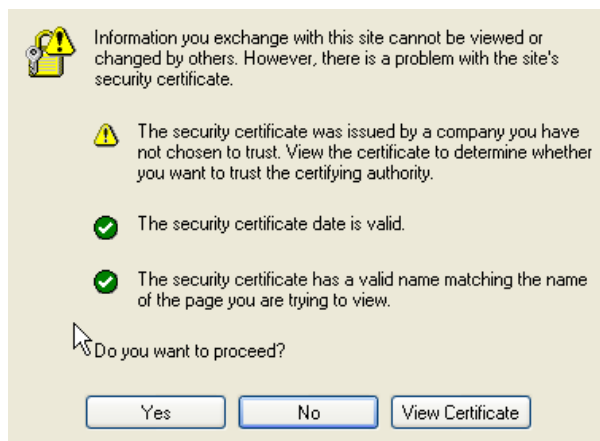
Once connected, close the window.

Open Internet Explorer and try connecting to a web site.

The following web page will open requesting a username and password. Enter your username (student ID number or visitor code) and password.



If you get a window asking *Do you wish to proceed?* , similar to the one shown below, click **Yes** to accept the security certificate.



Once the system has authenticated, you will get the following screen. Wait for about 10 seconds and then go to the web page you require. If nothing happens after 10 seconds, try refreshing your web page.

