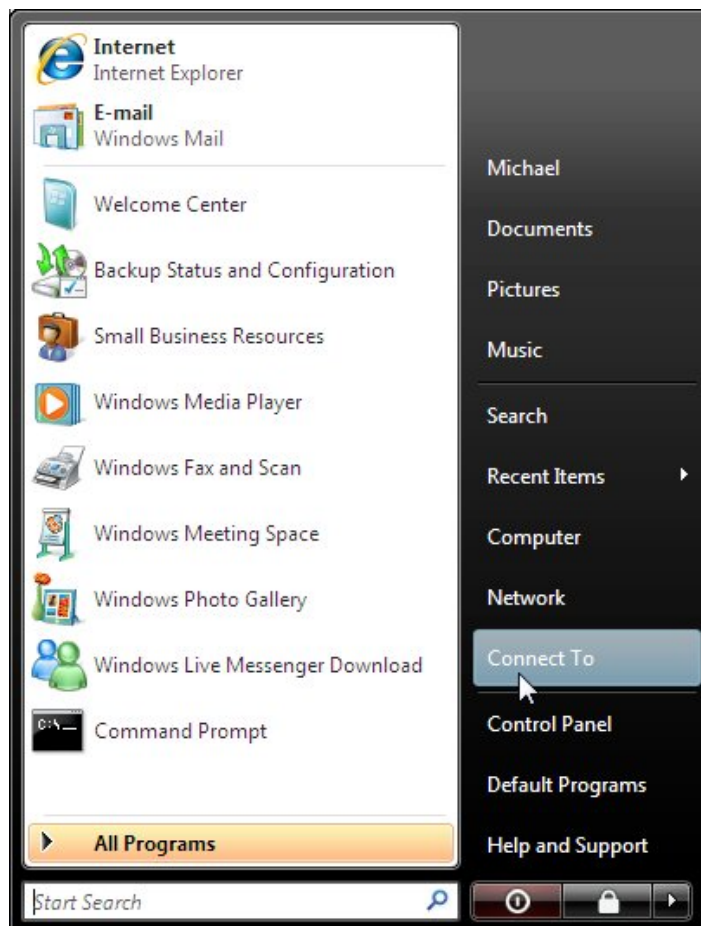


Student and Visitor wireless network setup for Windows Vista clients

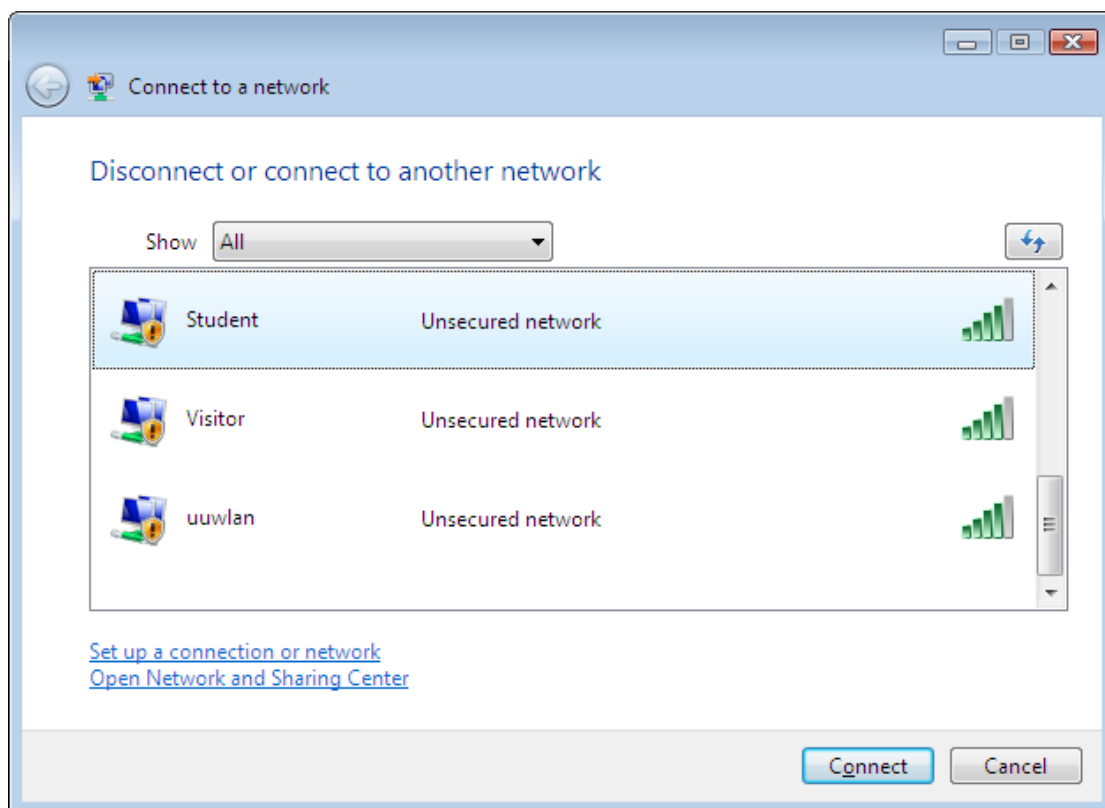
First ensure that your PC is set for DHCP. (See Appendix 1 on the wireless web page for instructions on how to do this.)

In this document, we will describe the setup for access to the **Student** wireless network. The visitor set up will be identical, except where we have used Student for selecting the wireless network, visitors should substitute the word Student with Visitor.

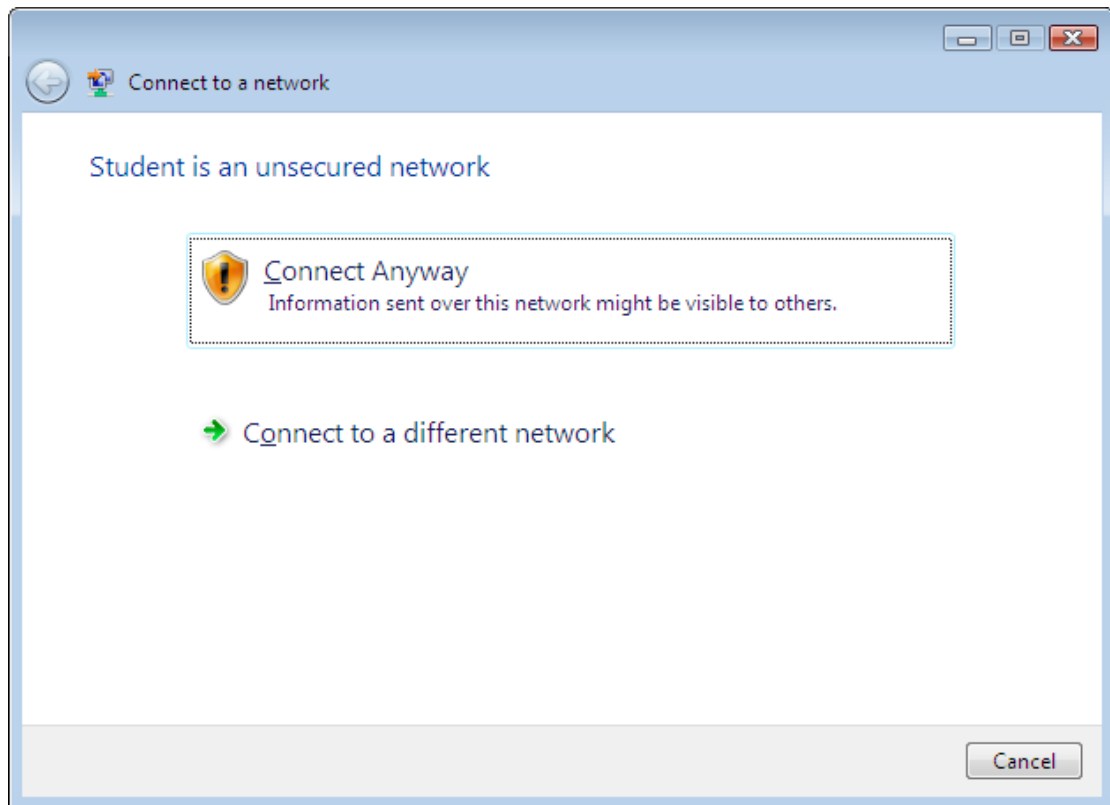
Select *Start* and then *Connect To*.



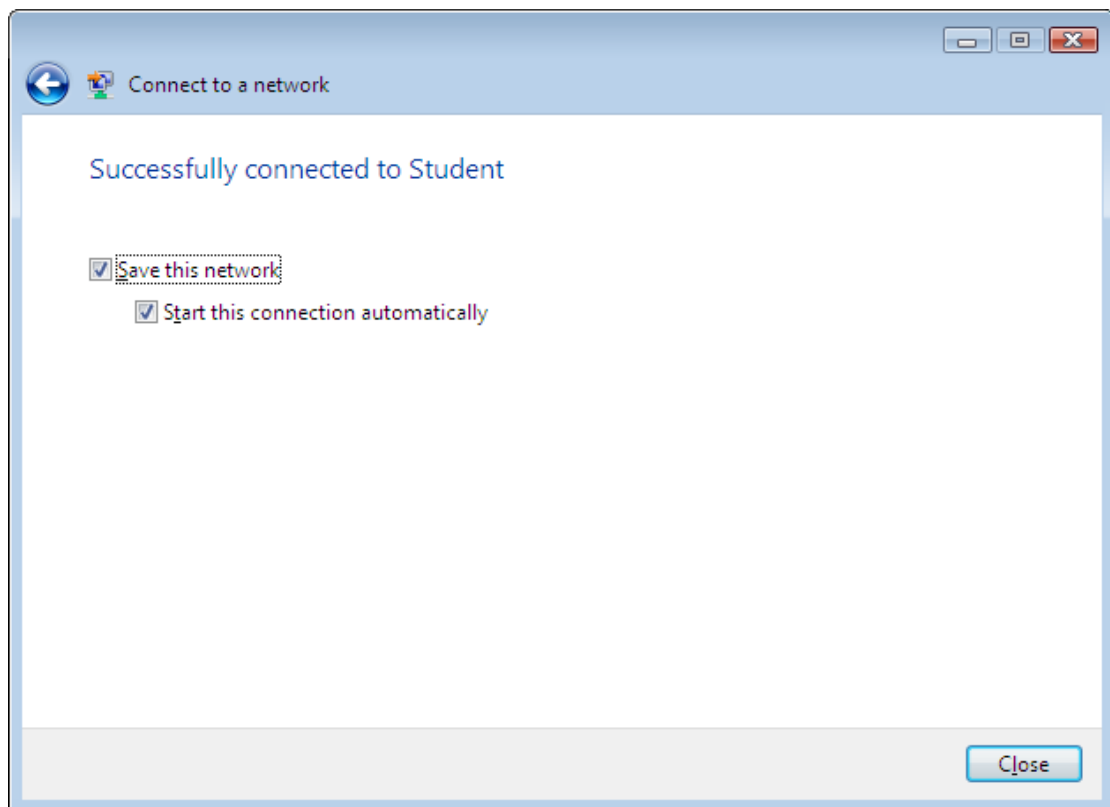
Select *Student* (*visitors select Visitor*) from the list of networks shown and then click the *Connect* button.



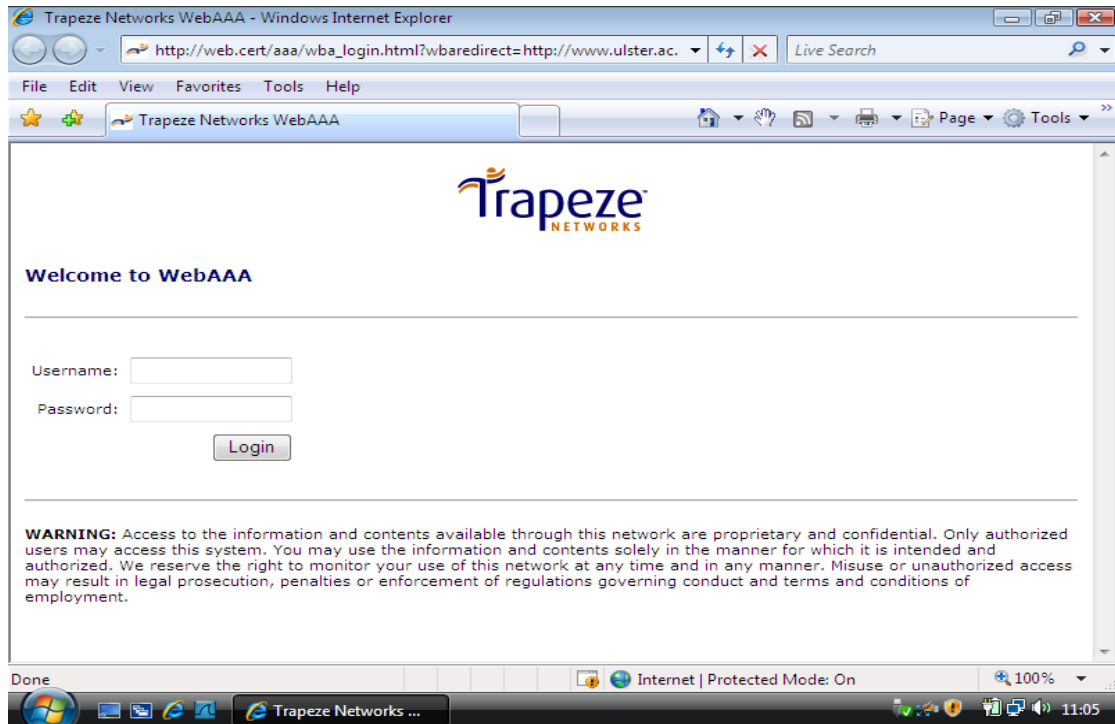
When prompted, click *Connect Anyway*



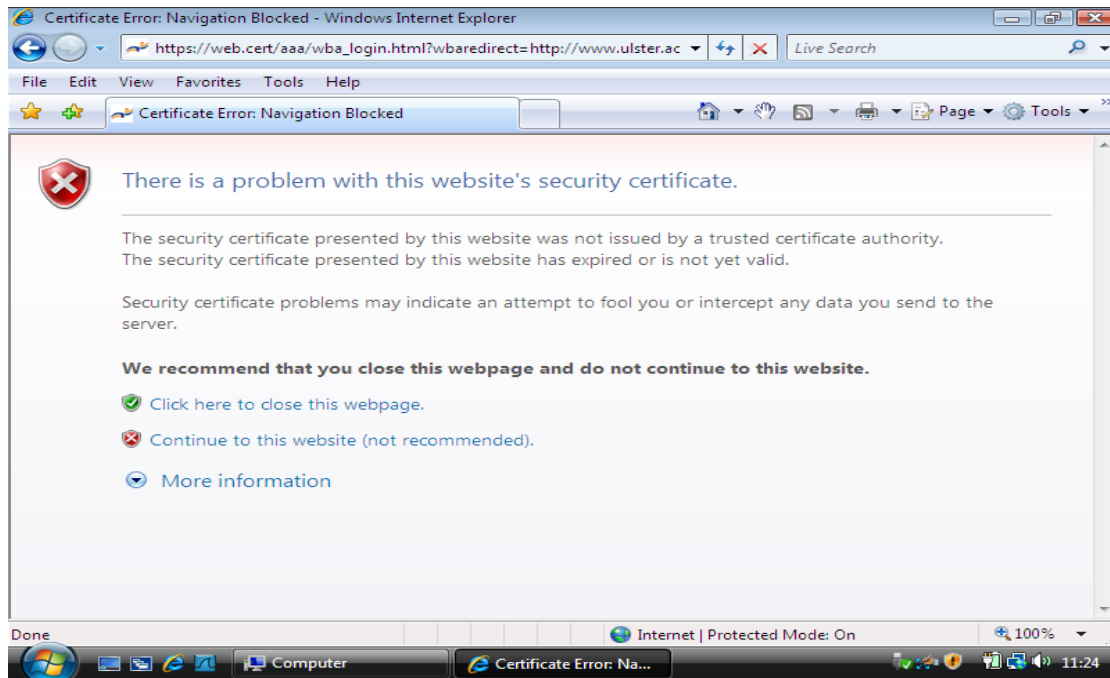
Once the connection has been made, tick the *Save this network* box and then click the *Close* button.



Open your web browser. The following web page will open requesting a username and password. Enter your username (student ID number or visitor code) and password.



Select *Continue to this website*



At this stage, you should get the following webpage. If after 10 seconds your web page does not appear, click to refresh your web page.

