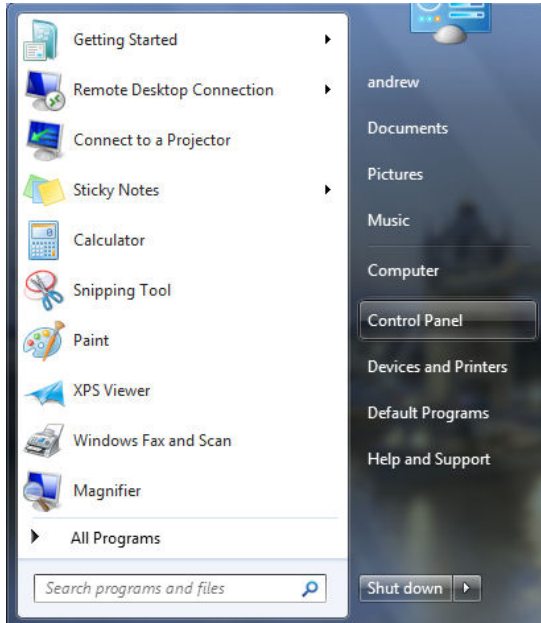
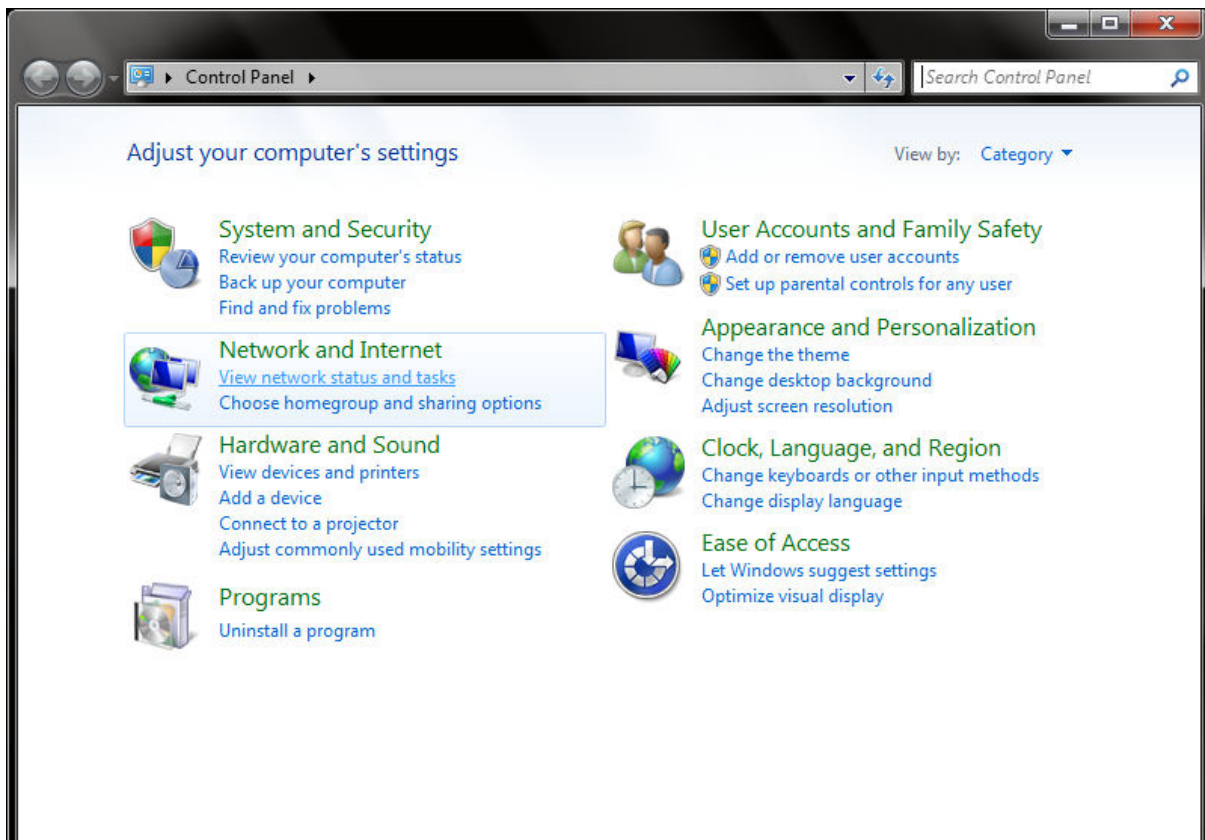


Changing the User Password for Staff Wireless Access on Windows 7

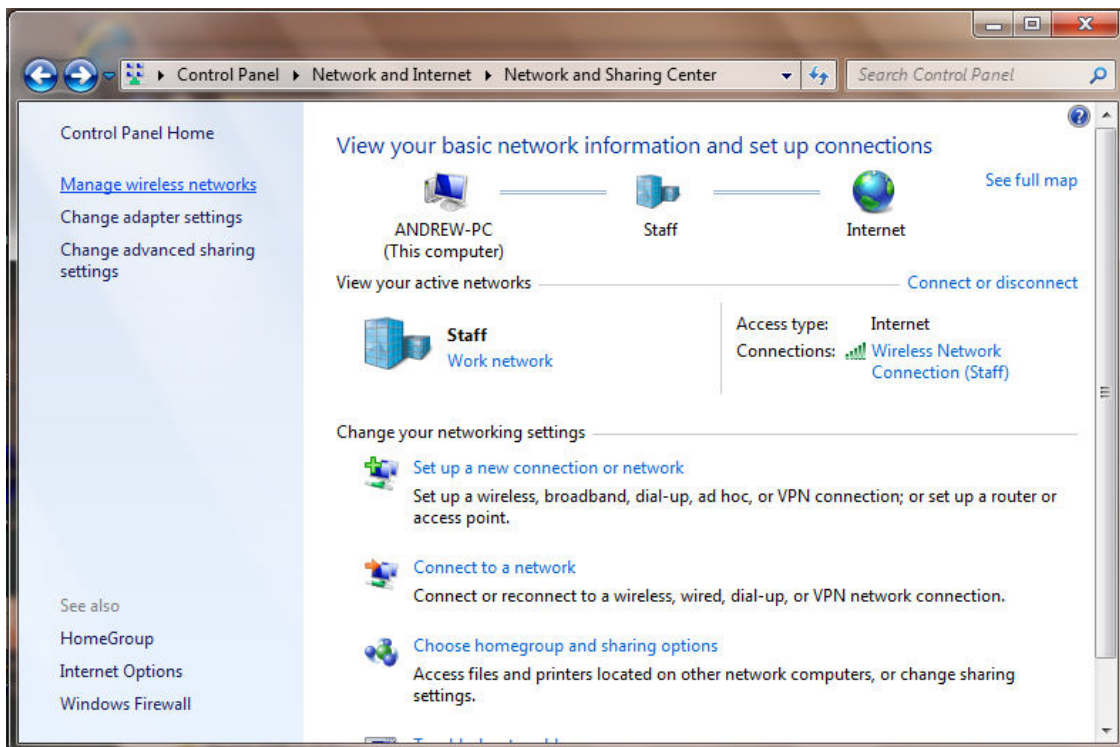
Select *Start* and then *Control Panel*.



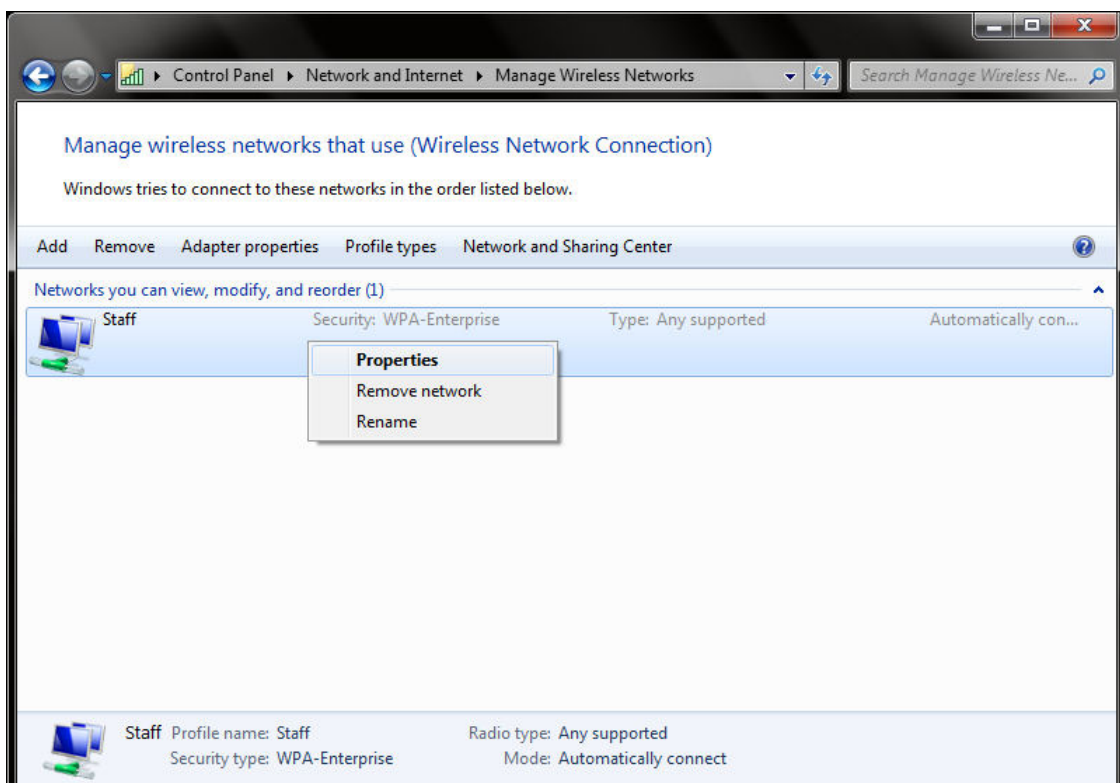
Select *View network status and tasks* from the *Network and Internet* section.



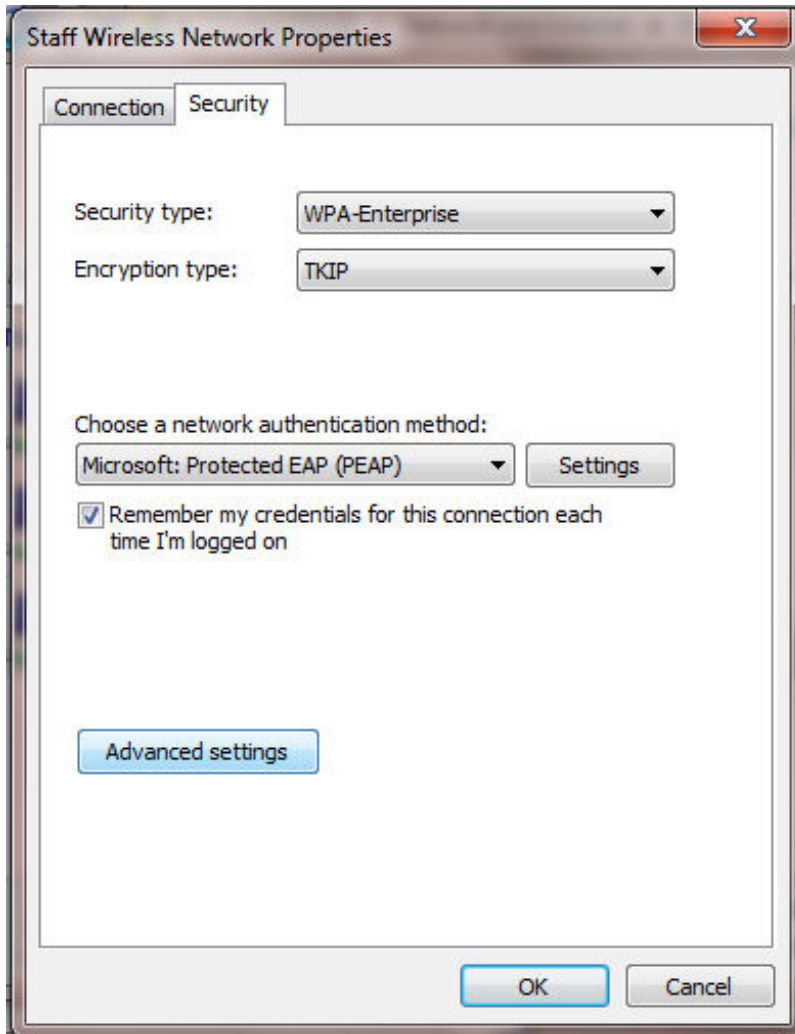
Select *Manage wireless networks* from the *Control Panel Home* pane located on the left of the active window.



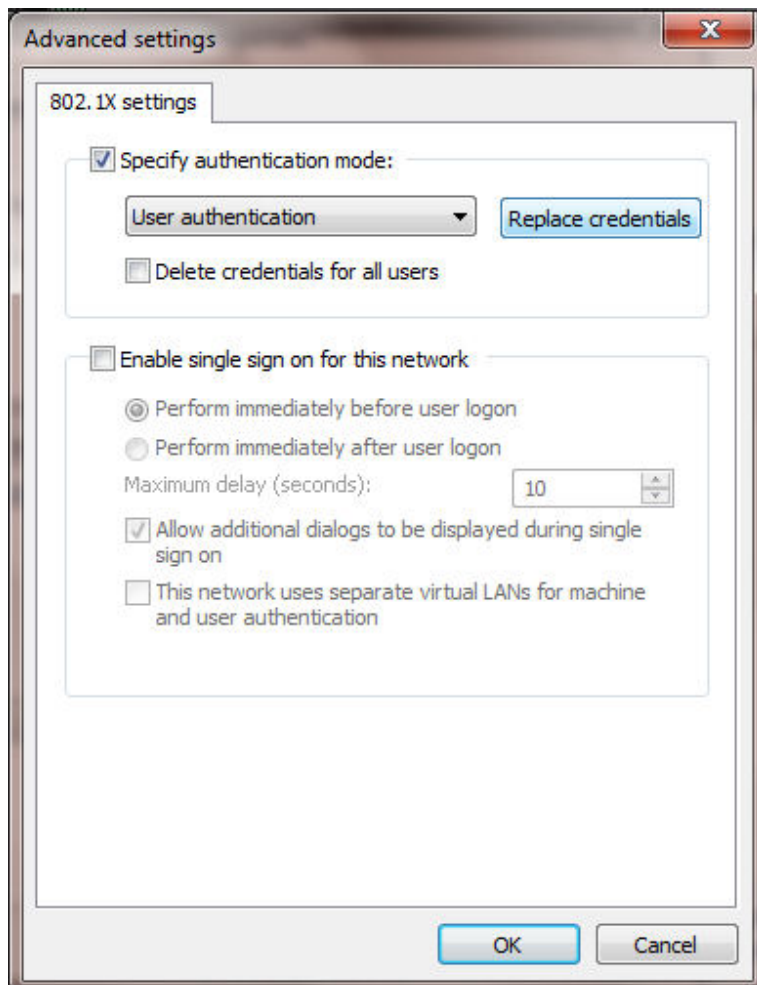
Either double left mouse click on the *Staff network* or alternatively right mouse click on the *Staff network* and then select *Properties* from the sub menu.



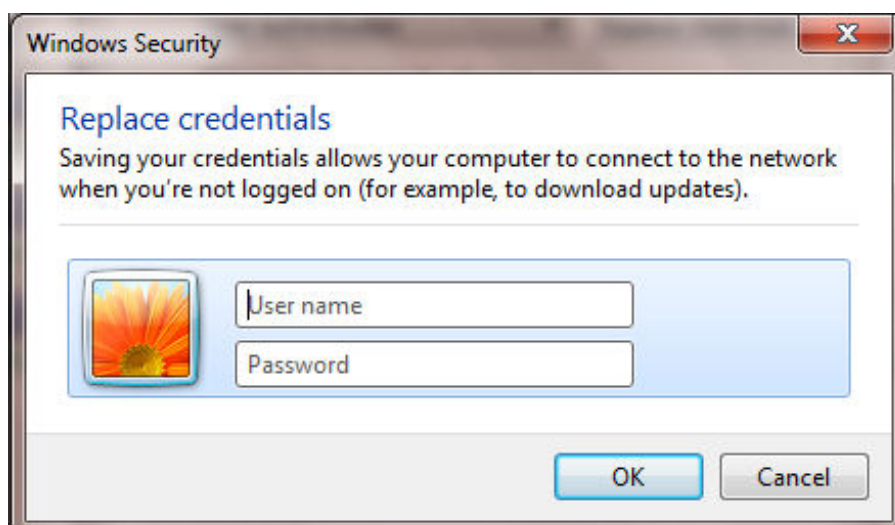
Select the *Security Tab* on the Staff Wireless Network properties window and then select the *Advanced settings* button.



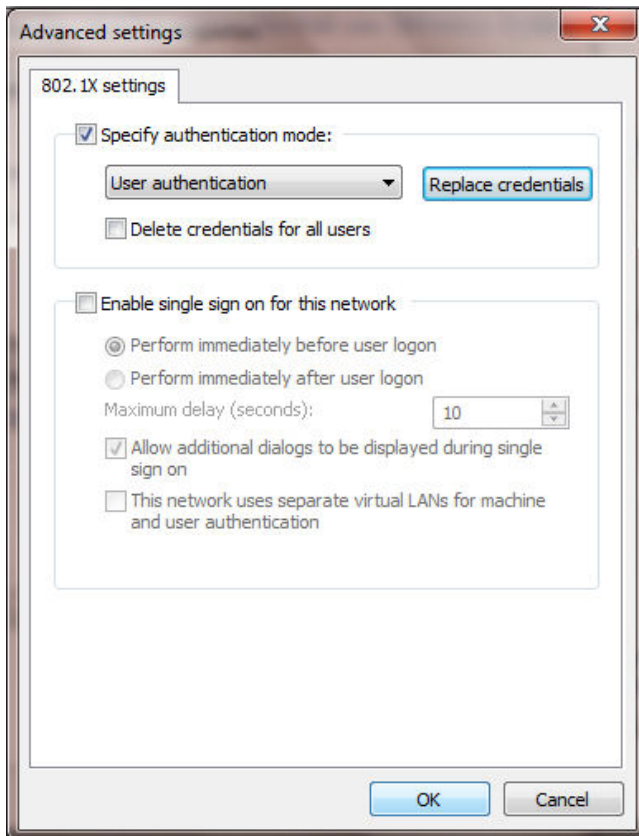
Select the **Replace credentials** button on the 802.1X settings tab within the Advanced settings window.



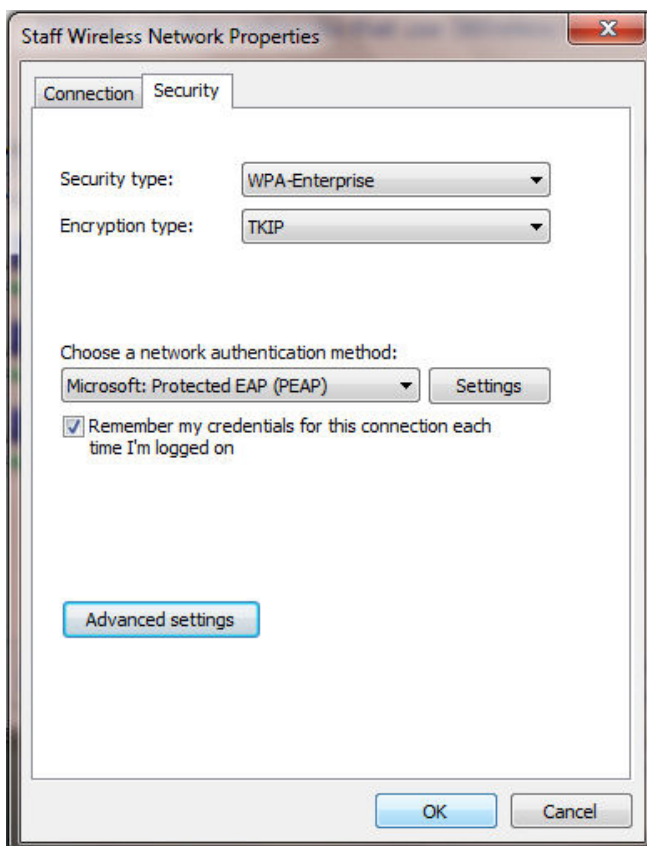
Enter your **Staff Ecode** for username and **AD/Exchange password** for password and then select the **OK** button.



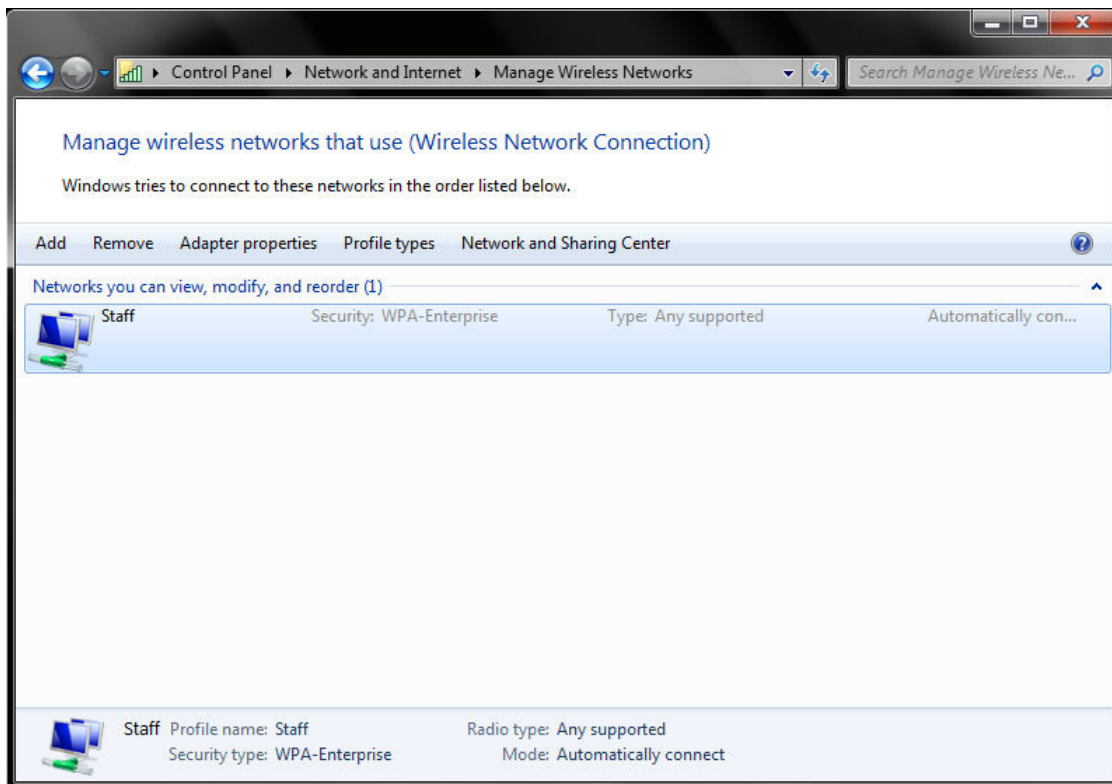
Select the **OK** button from the Advanced settings window.



Select the **OK** button from the Staff Wireless Network properties window.



Close this window by selecting the **X button** located on top right of window.



If the new credentials have been accepted you will be able to see a successful **Wireless Network Connection to Staff** within the **View your active networks** section.

