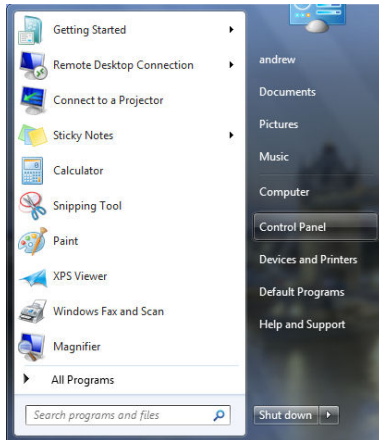


Staff Wireless Setup for Windows 7 Clients.

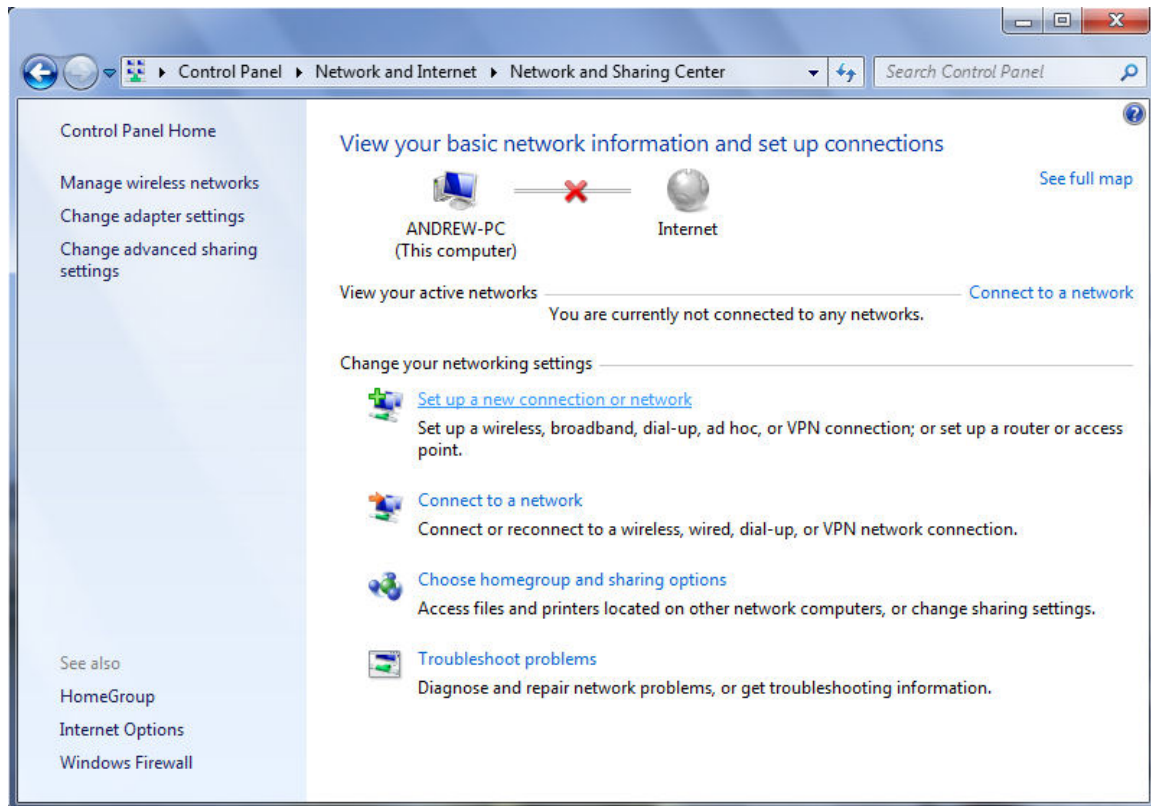
Select **Start** and then **Control Panel**.



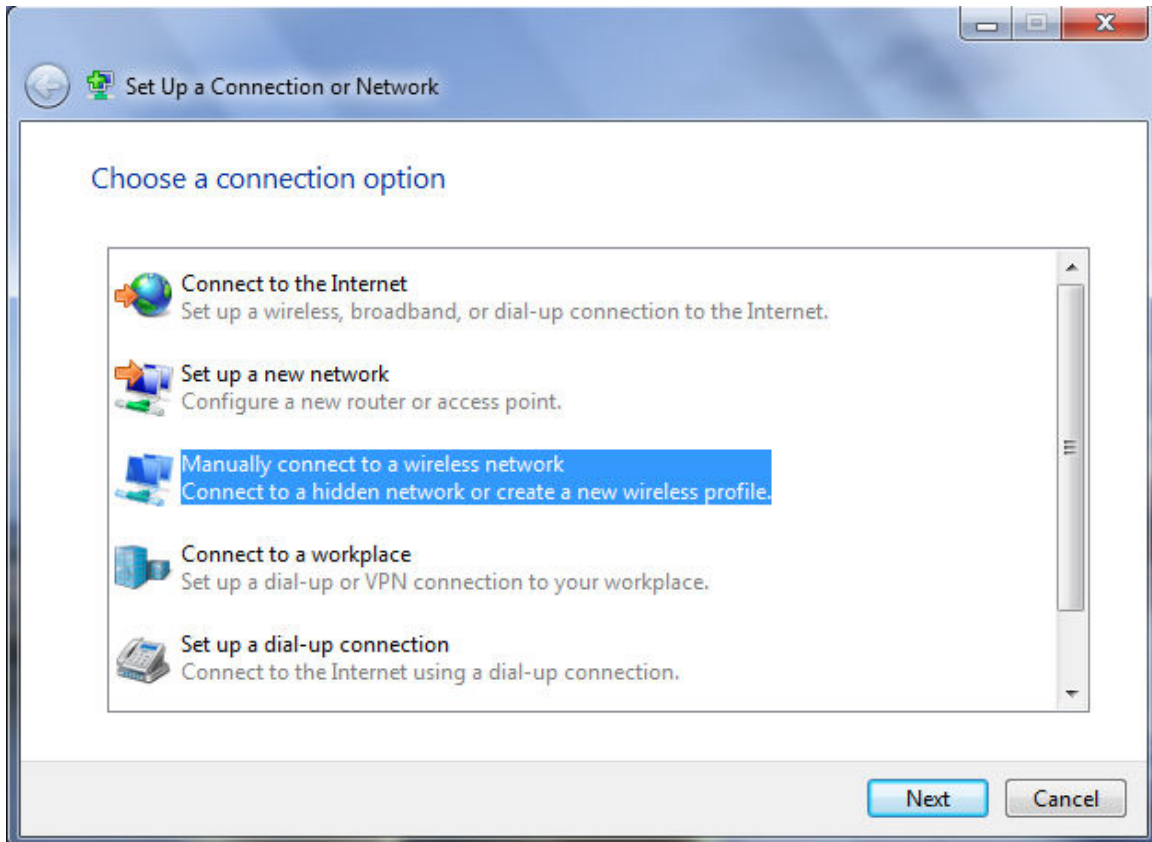
Select **View network status and tasks** from the **Network and Internet** section.



Select *Set up a new connection or network* from the *Change your networking settings* section.



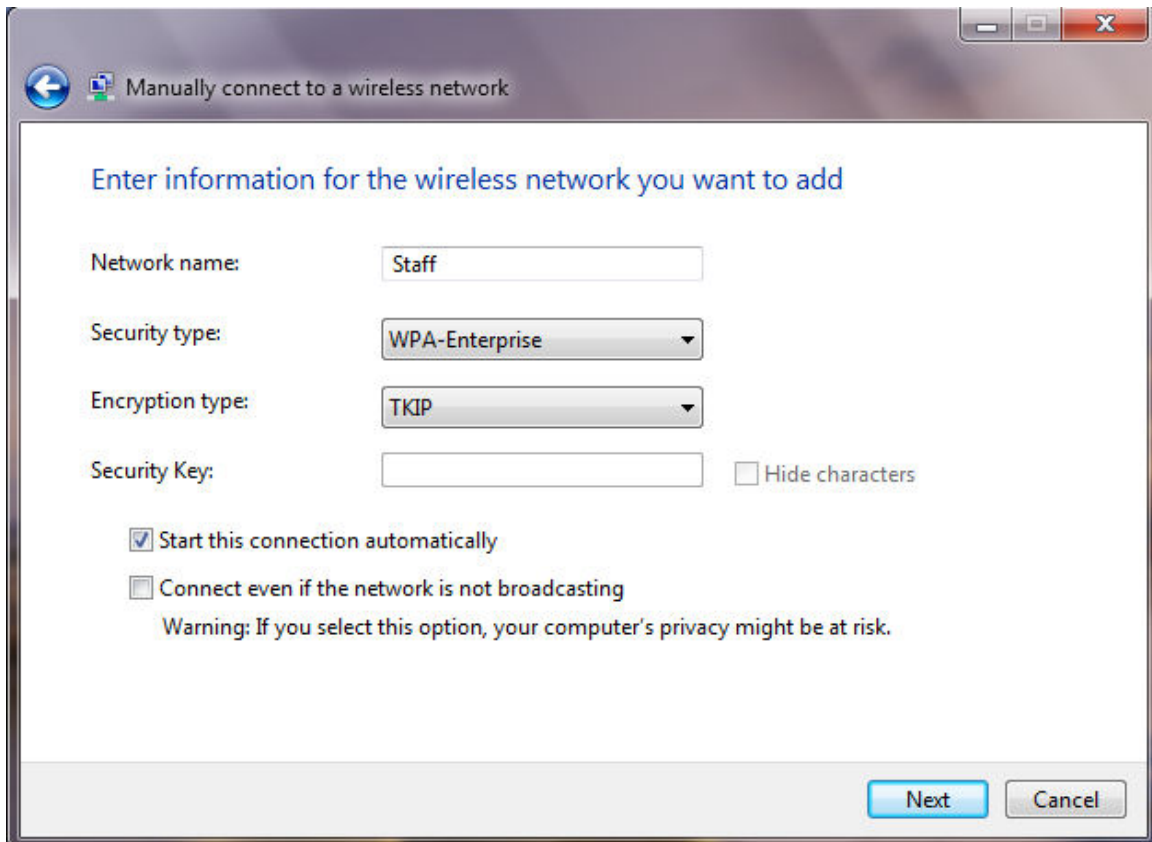
To manually configure the wireless settings for a wireless network, select ***Manually connect to a wireless network***.



On the *Enter information for the wireless network you want to add* page, configure the following settings:

Network Name: *Staff*
Security Type: *WPA-Enterprise*
Encryption Type: *TKIP*

And click *Next*.

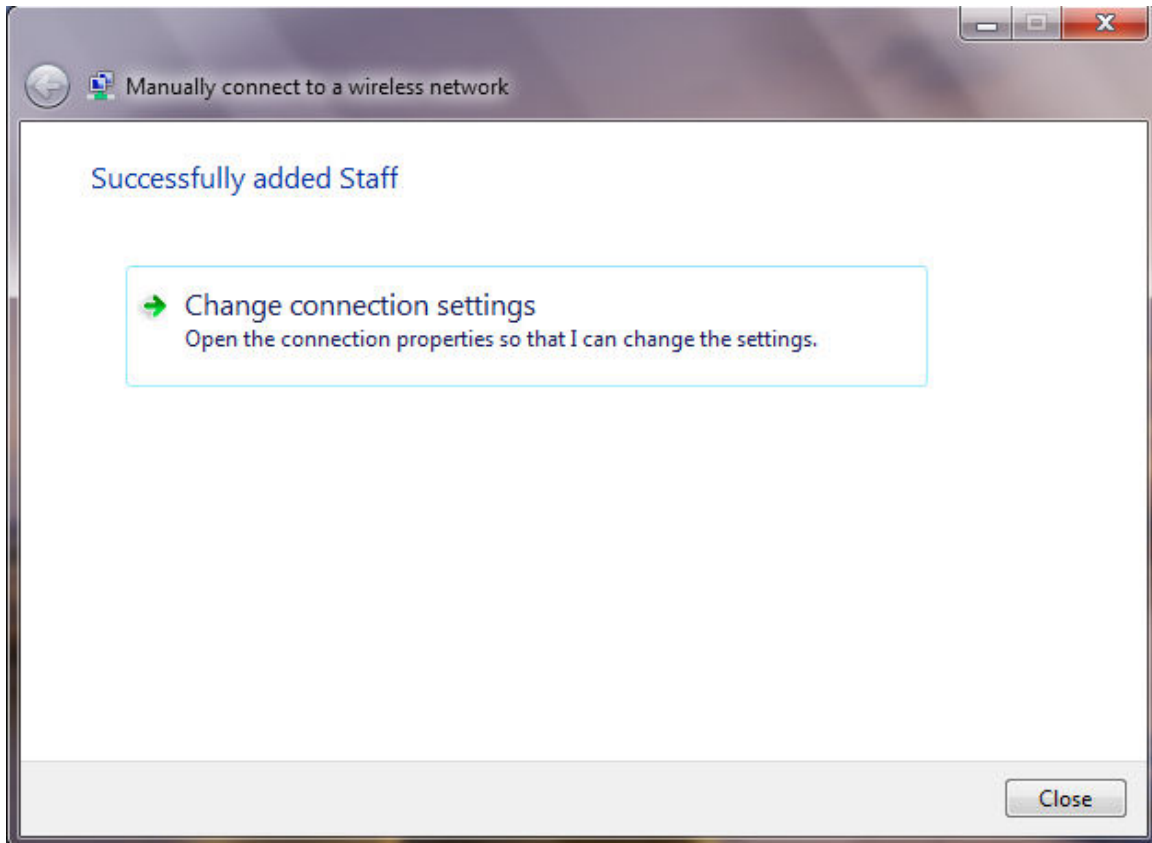


The screenshot shows a Windows dialog box titled "Manually connect to a wireless network". The main heading is "Enter information for the wireless network you want to add". The form contains the following fields and options:

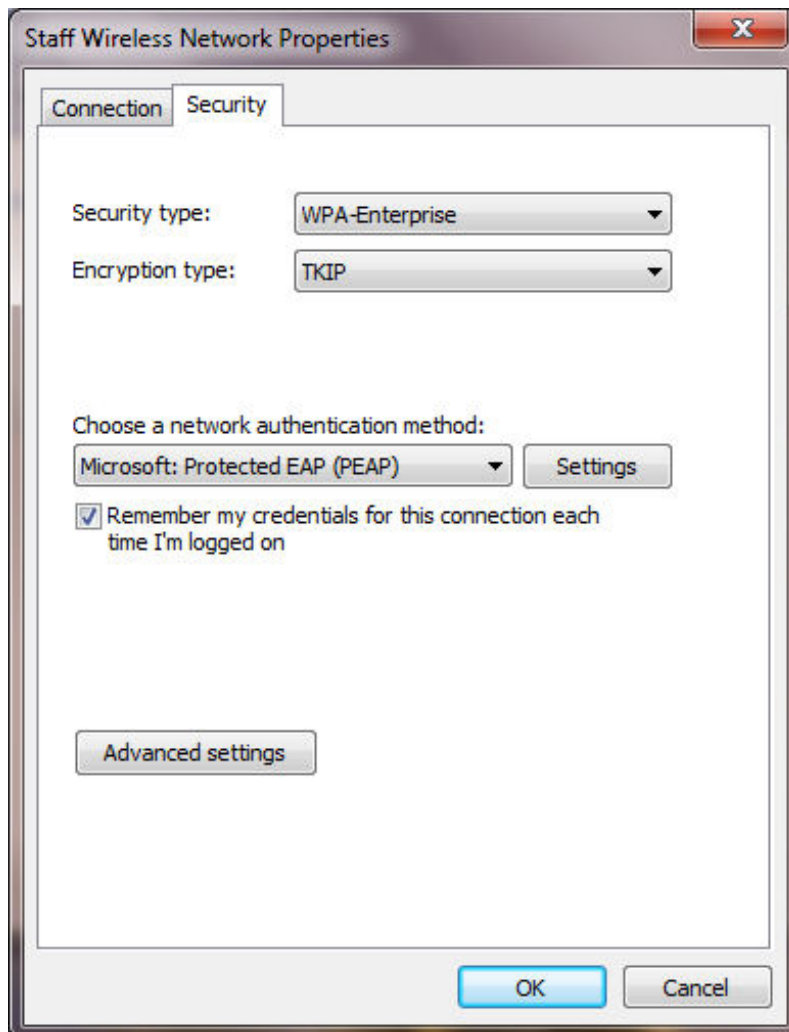
- Network name: Text box containing "Staff".
- Security type: Dropdown menu set to "WPA-Enterprise".
- Encryption type: Dropdown menu set to "TKIP".
- Security Key: Text box (empty) with a "Hide characters" checkbox to its right.
- Start this connection automatically
- Connect even if the network is not broadcasting
- Warning: If you select this option, your computer's privacy might be at risk.

At the bottom right, there are "Next" and "Cancel" buttons.

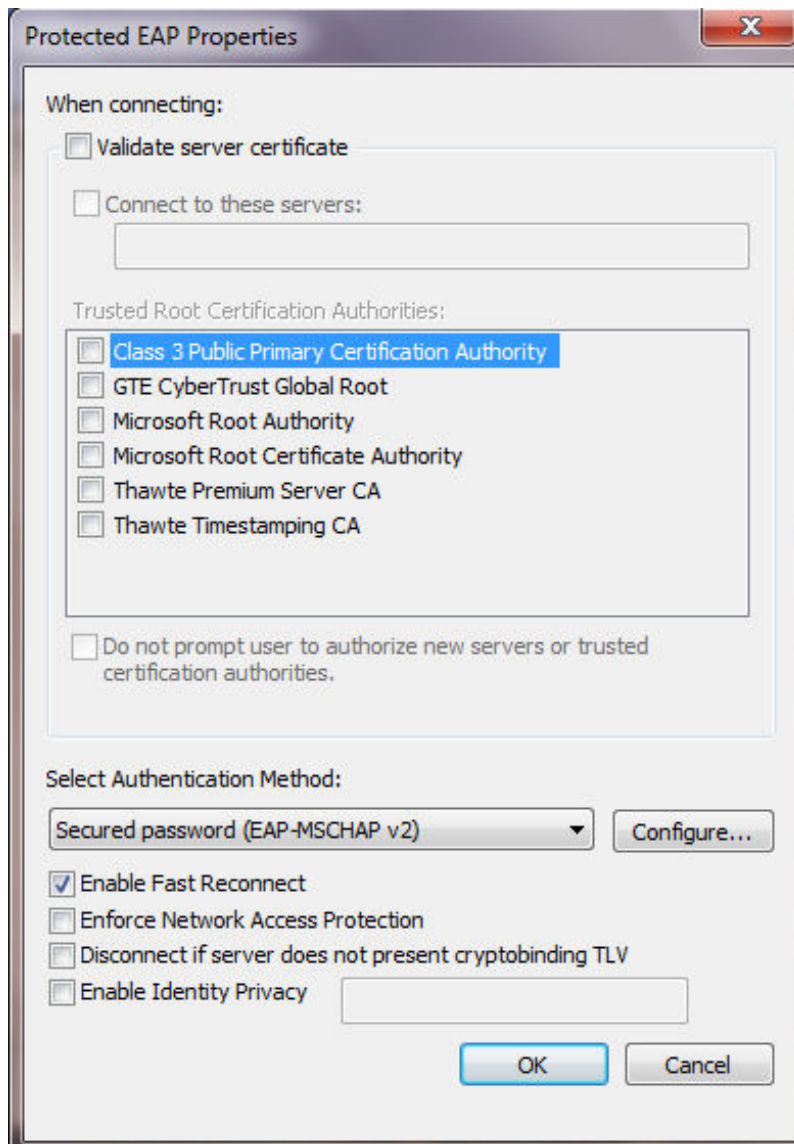
Select *Change connection settings*.



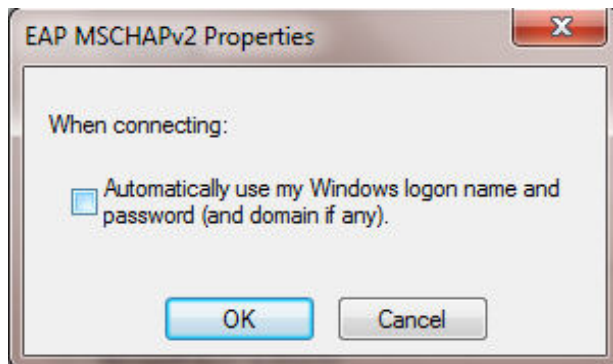
Choose the *Security* tab and then the *Settings* button.



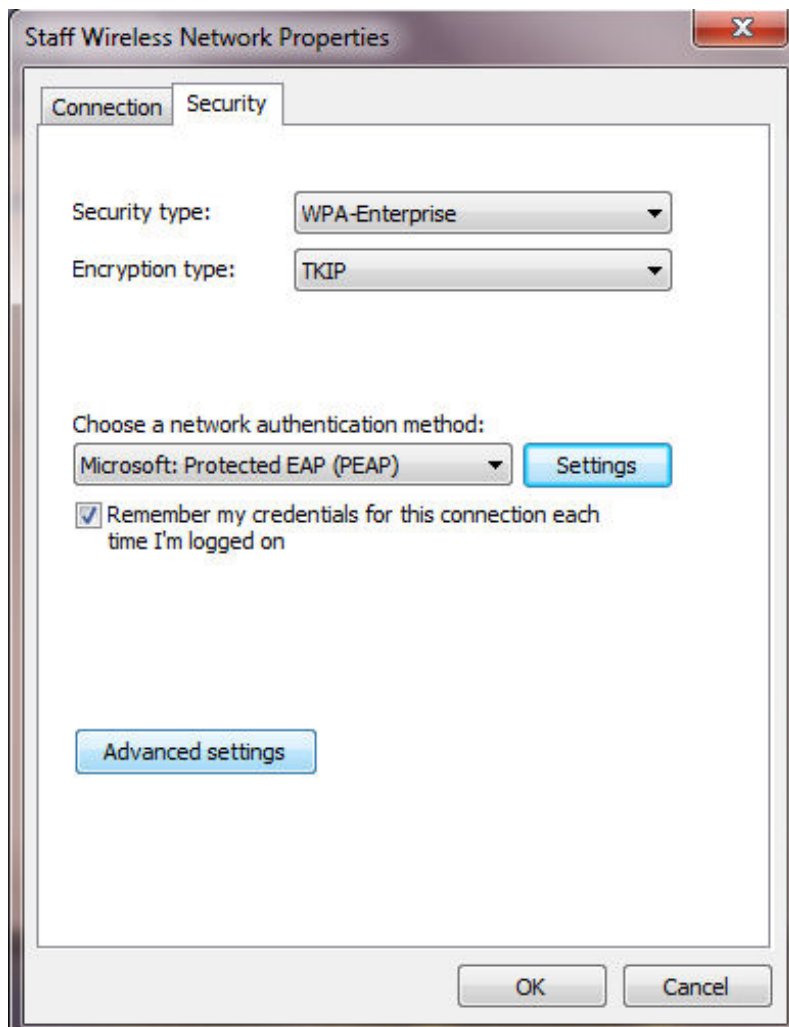
Unselect the *Validate server certificate* box and click the *Configure* button.



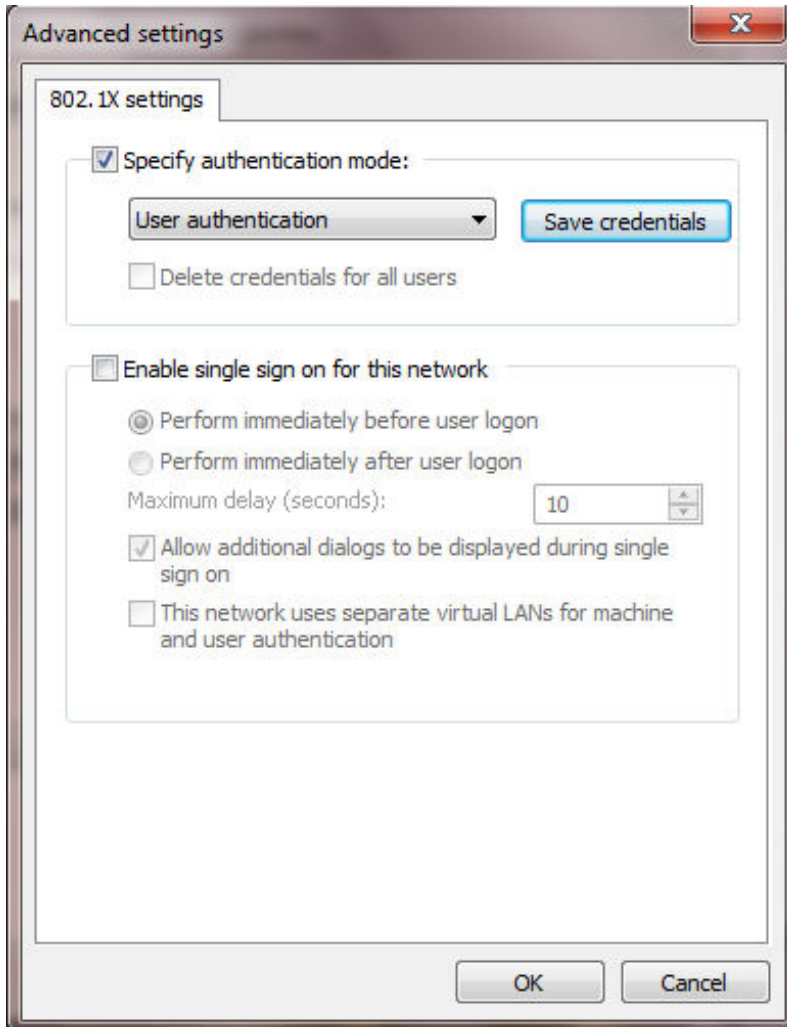
Unselect the box for *Automatically use my Windows logon name*.



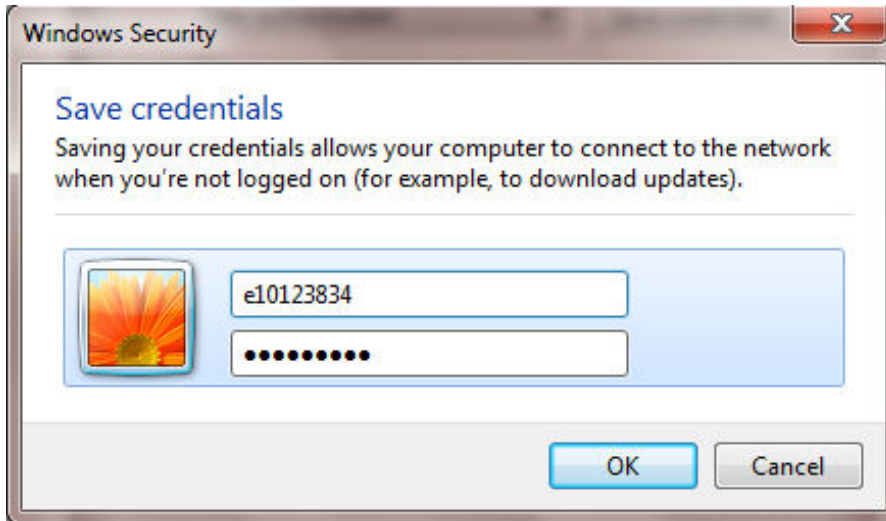
Click OK until you return to the Staff Wireless Network Properties page and select *Advanced Settings*.



Select *Specify authentication mode* and choose *User authentication* from the drop down menu options. Then click *Save credentials*.



When the *Save credentials* screen is displayed, enter your *Staff ecode* for username and your *Exchange/AD password* for password.



Click OK until you return to the **View your basic network information and set up connections** screen. If your details are accepted, then the Staff network will display as being connected.

