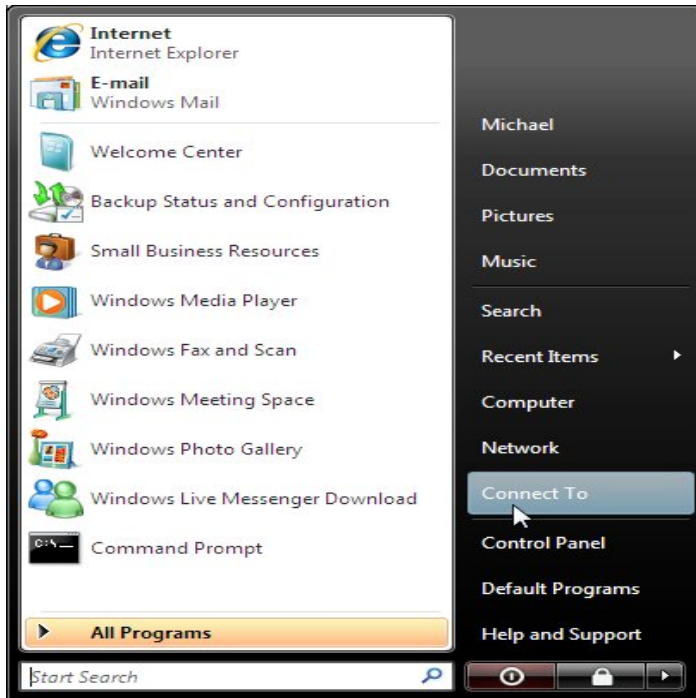
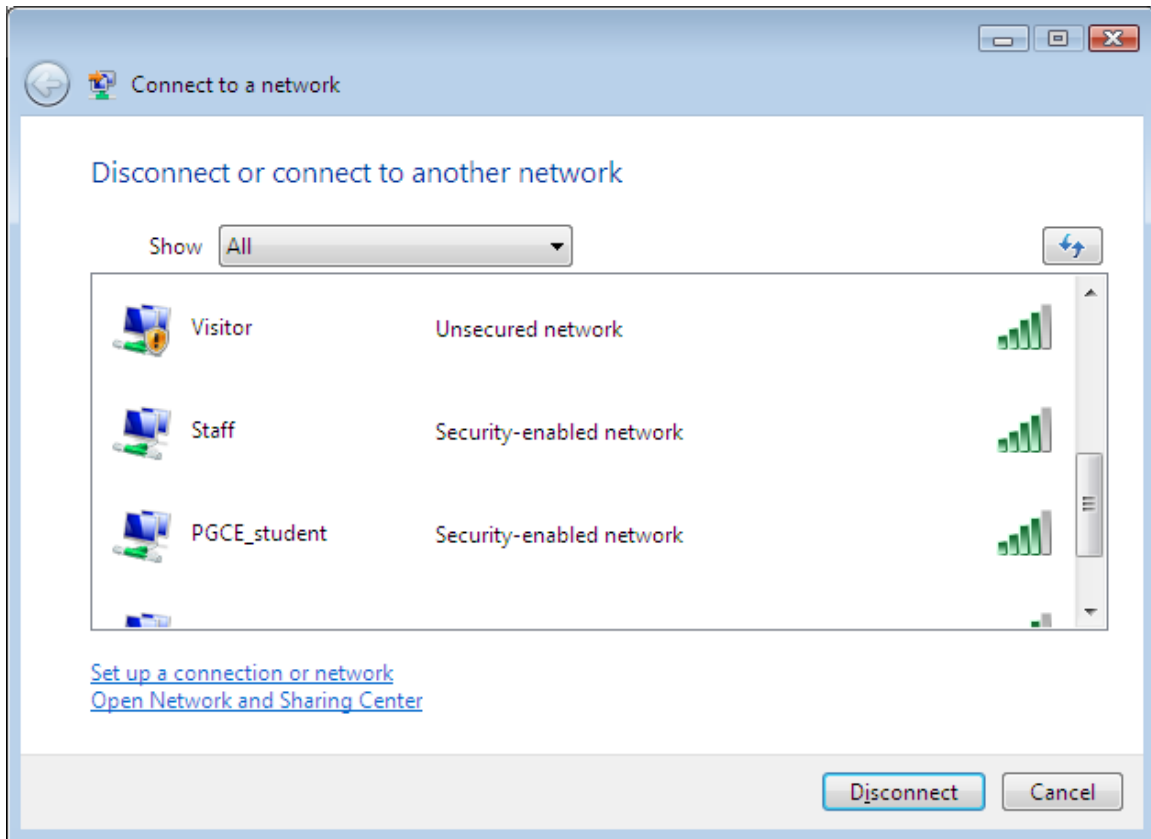


Staff Wireless Setup For Vista Clients

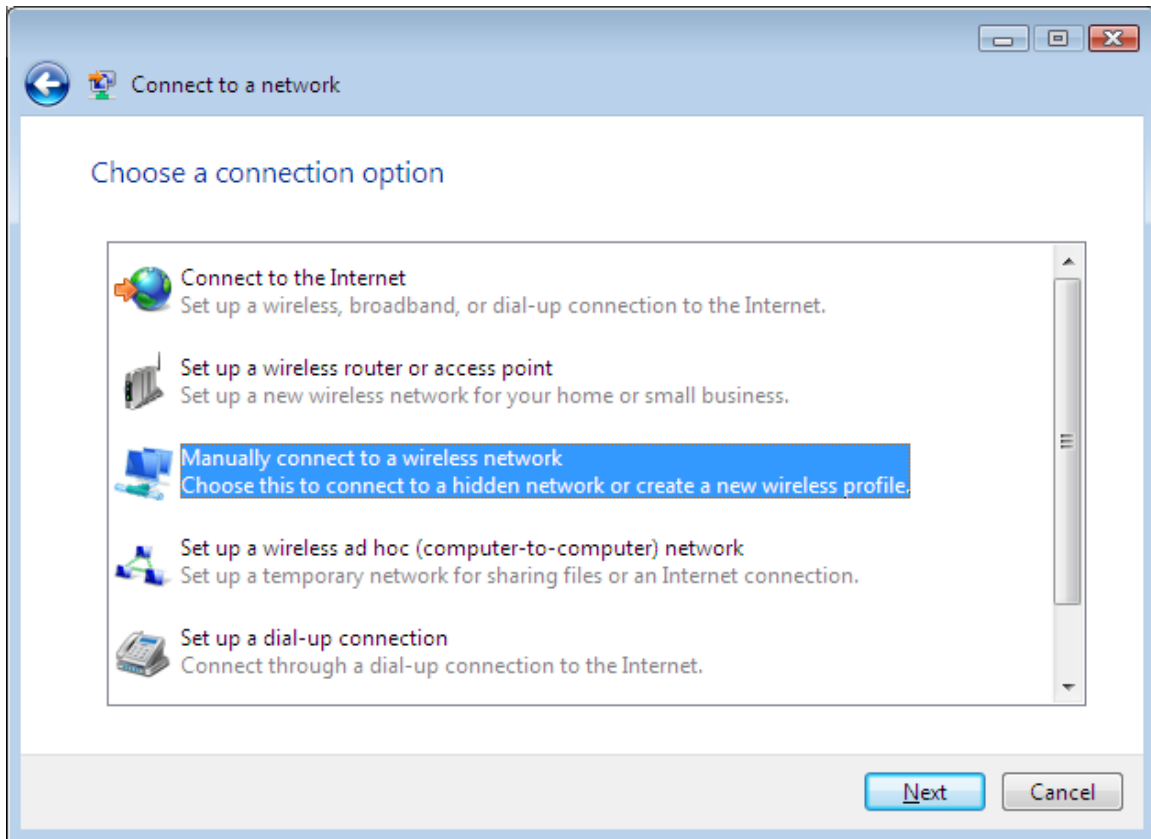
Select *Start* then *Connect To*



Select **Setup a connection or network**

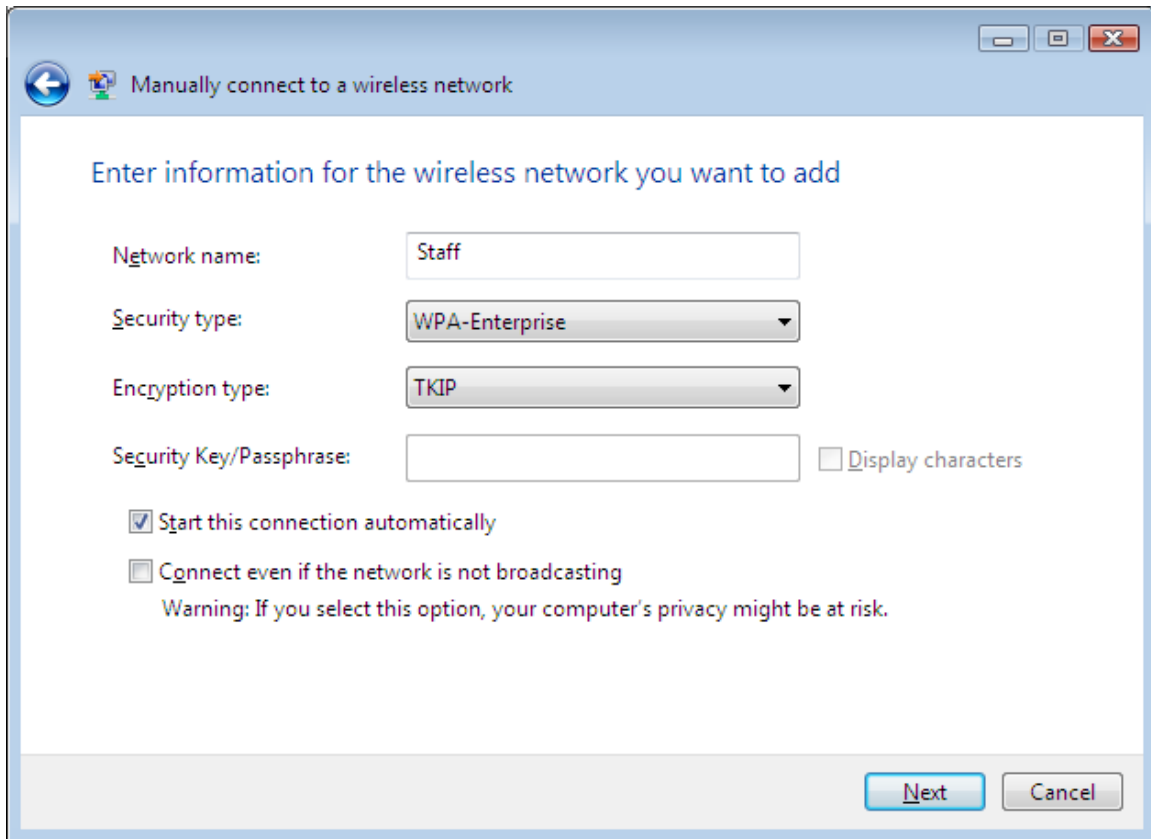


To manually configure the wireless settings for a wireless network, *select **Manually connect to a wireless network*** and click *Next*

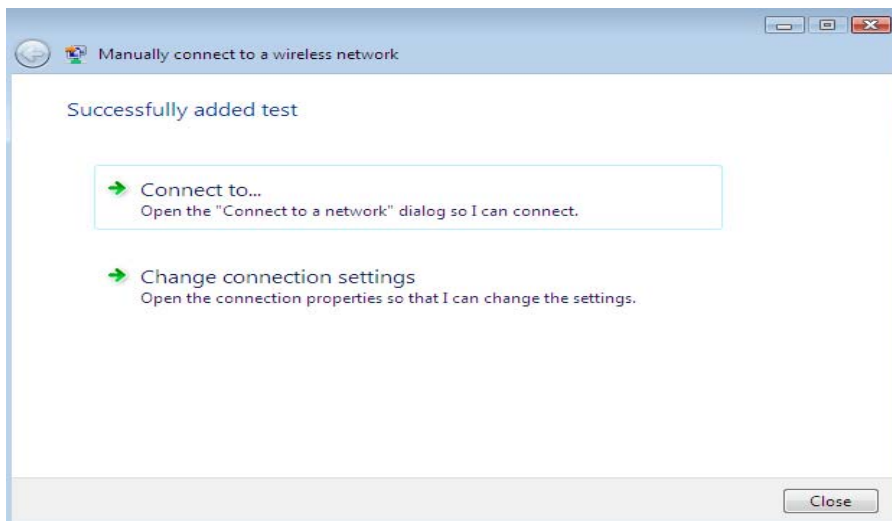


On the *Enter information for the wireless network you want to add* page, configure the following settings

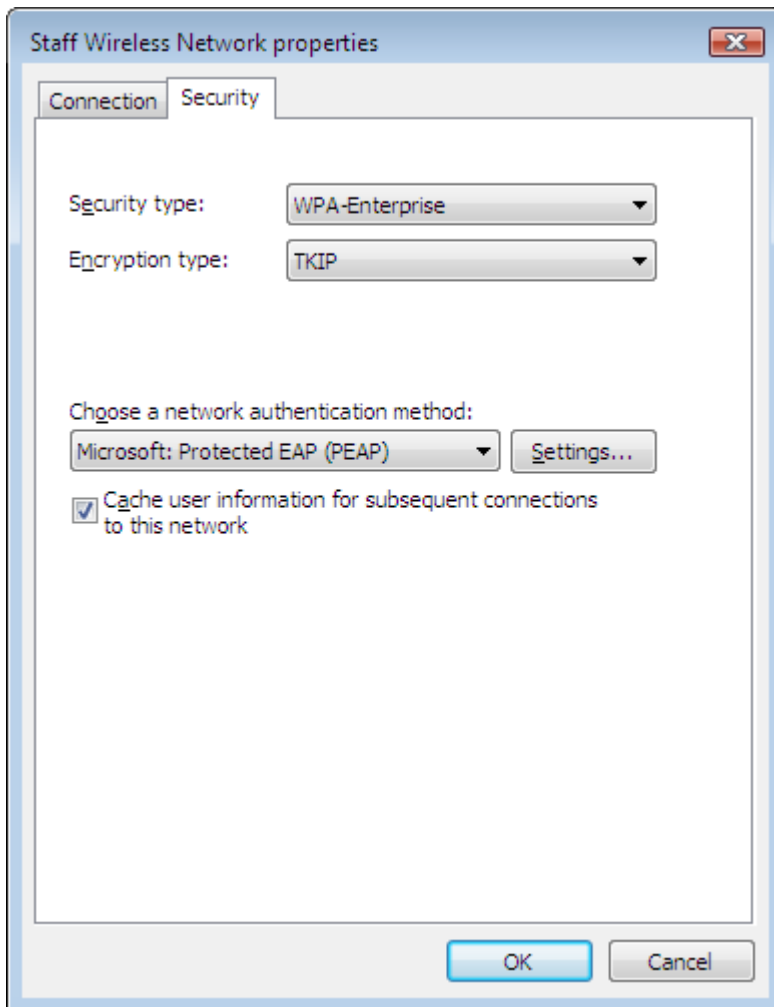
Network name **Staff** , Security type **WPA-Enterprise**,
Encryption type **TKIP** and click **Next**



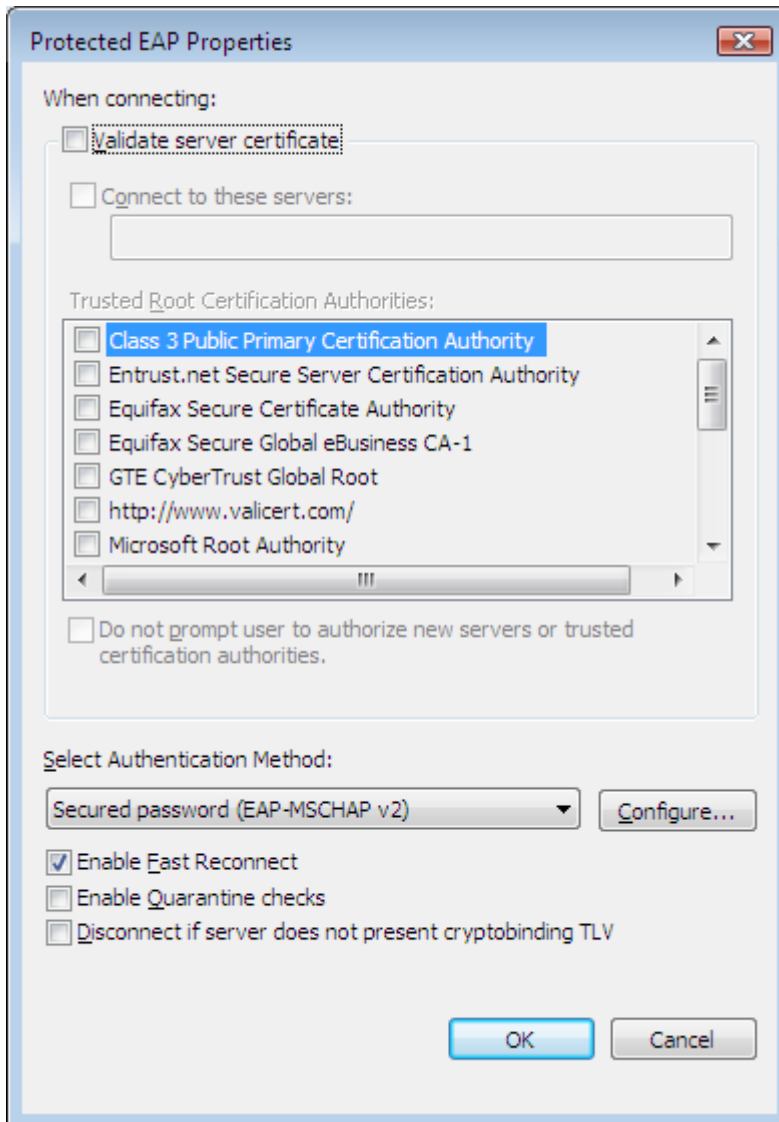
Select *Change connection settings*



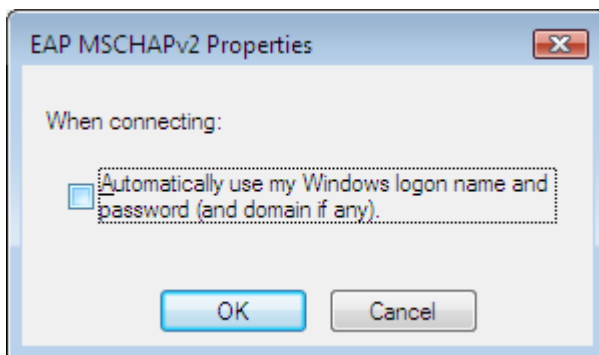
Choose the *Security* tab and then click on the **Settings** button



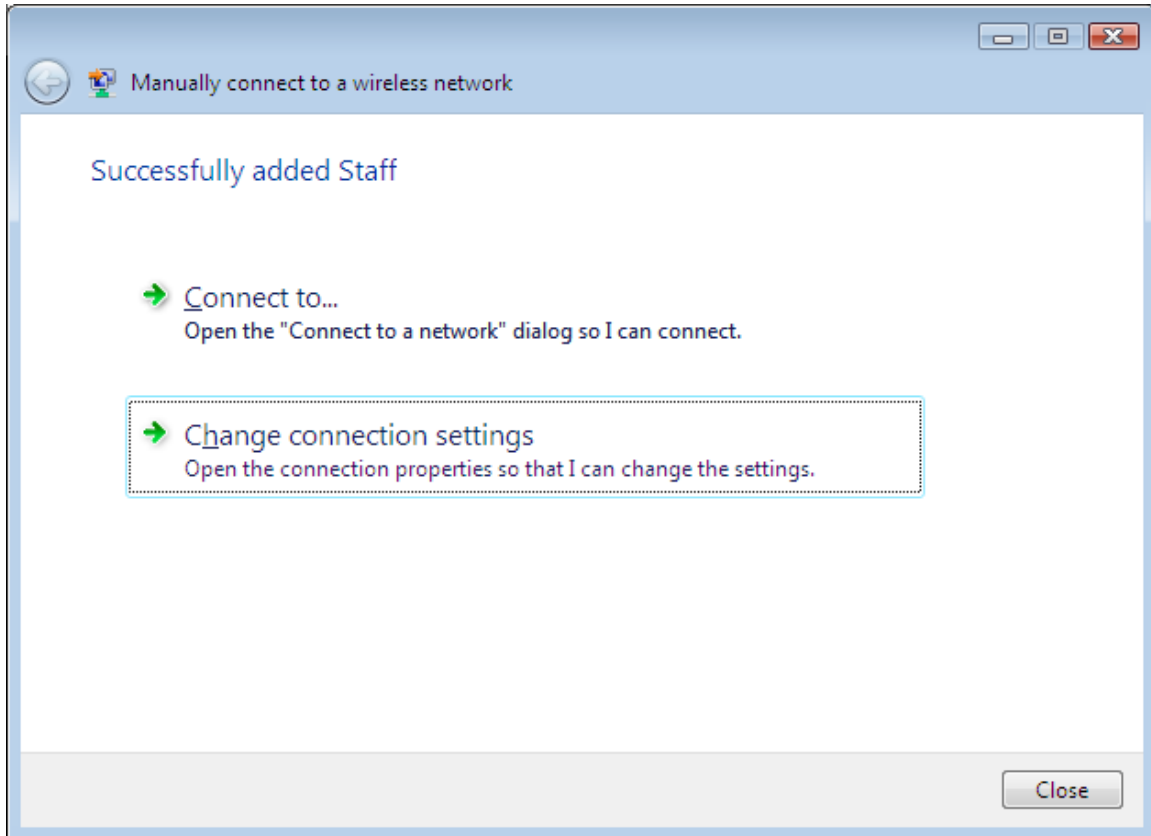
Untick the **Validate server certificate** box and click on the **Configure** button



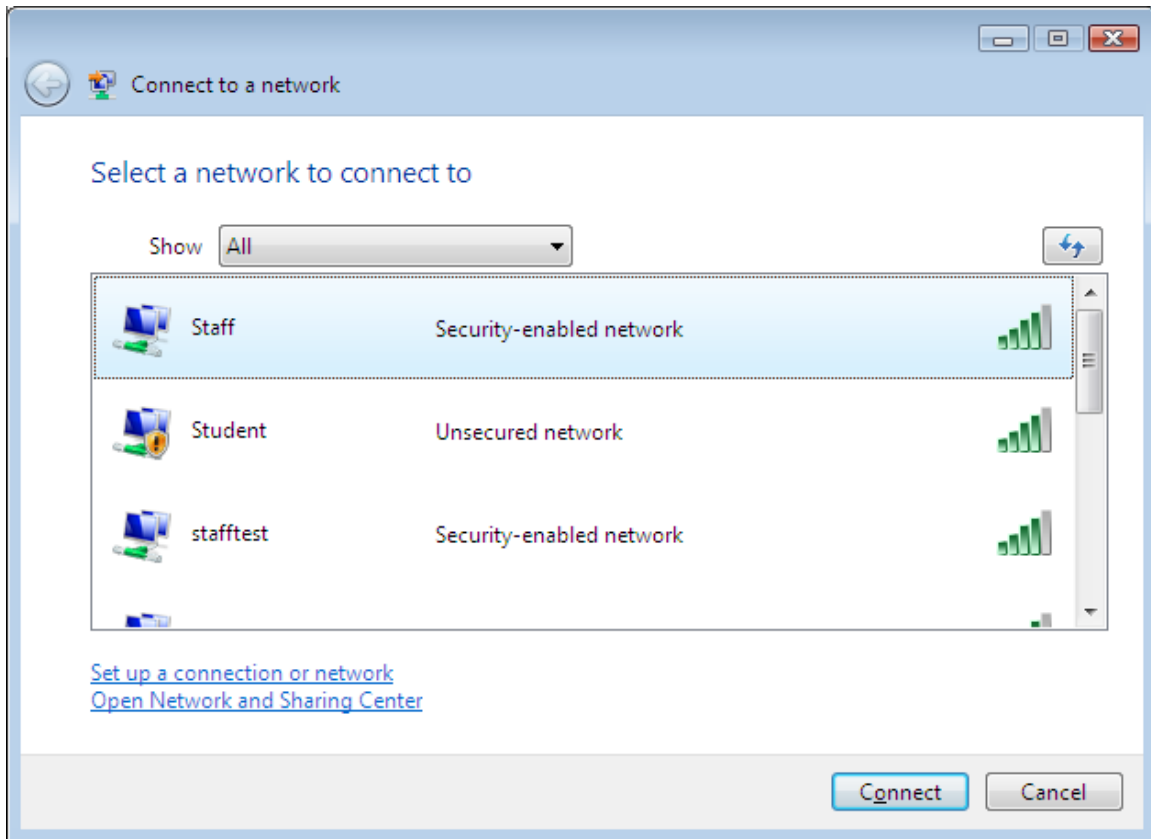
Untick the box for *Automatically use my Windows logon name*



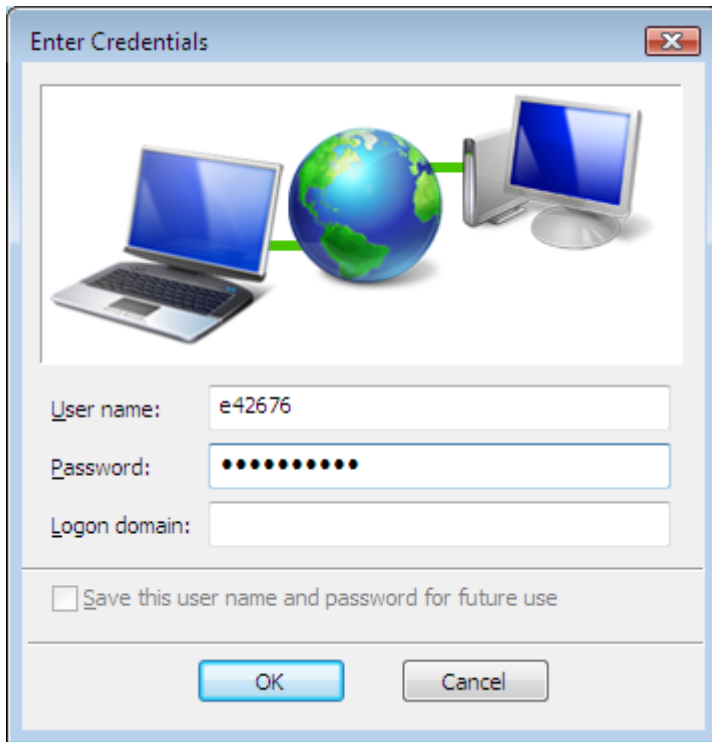
Click **OK** until you return to the *Connect to* page and select *Connect to a network*



Select **Staff** and click *Connect*



When prompted to **Enter Credentials**, enter your staff ecode for username and your Exchange/AD password for password. Leave Logon Domain blank.



If your logon details are accepted, then **Staff** section will change to *Connected*.