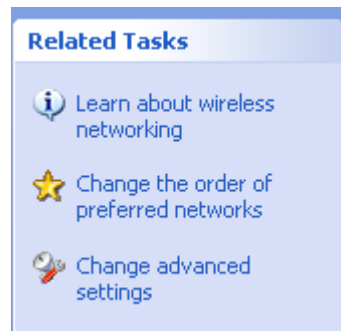
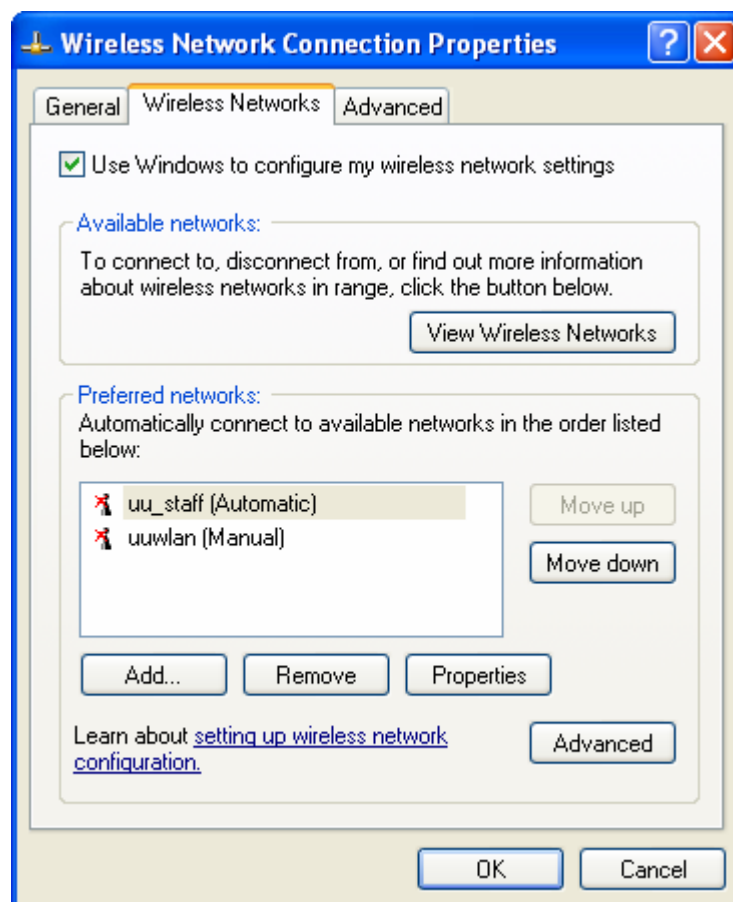


UU_STAFF Authentication Client Setup

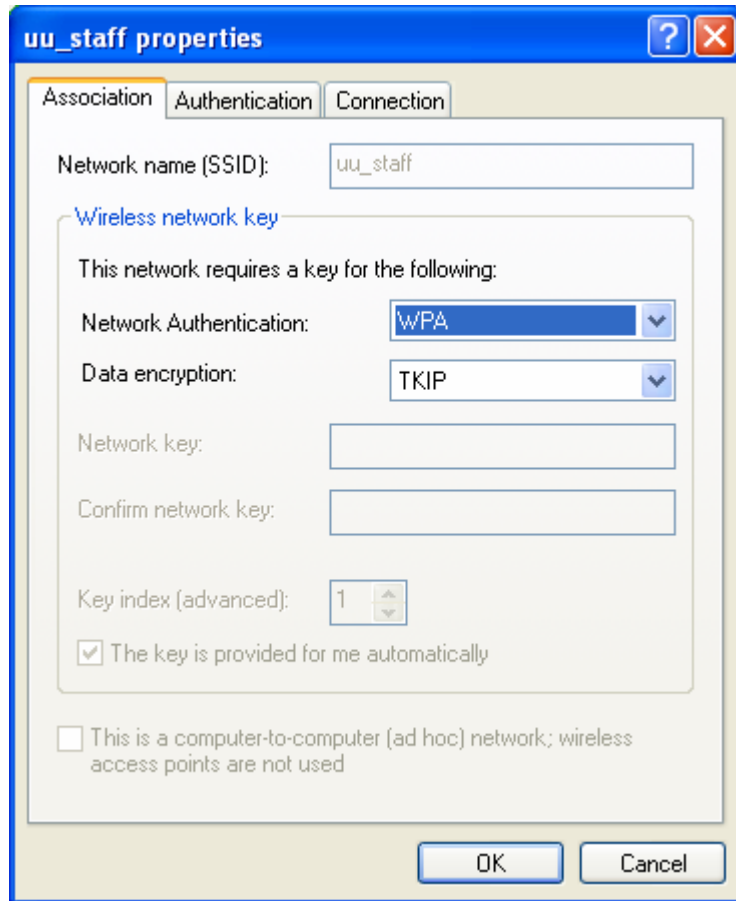
1. Select view wireless networks from network connections
 - Click on **start**
 - Select **Connect To**
 - Select **Wireless Network Connection**
 - Select **View Wireless Networks**
2. Click change advanced features



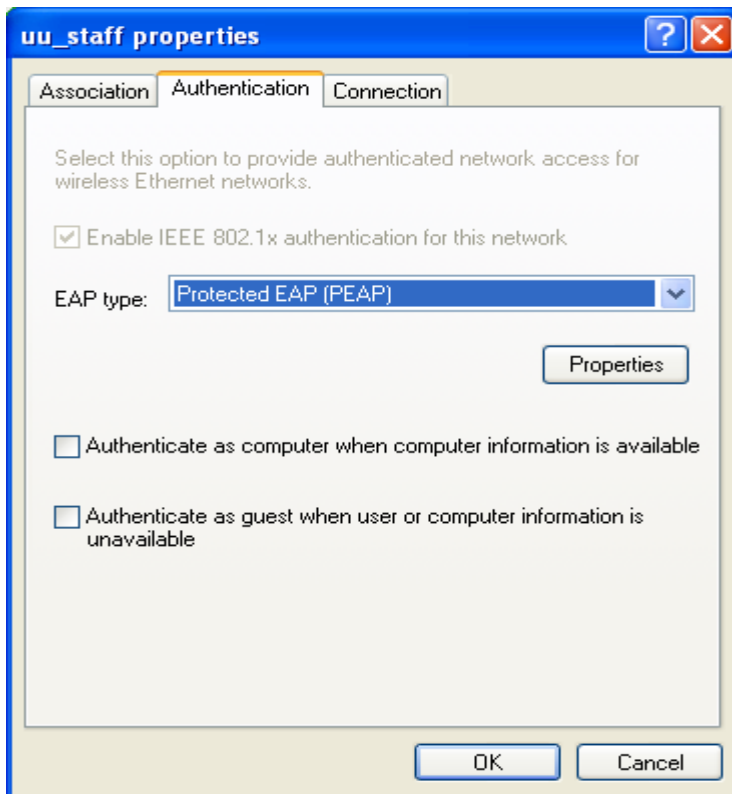
3. Select the Wireless Networks tab from the top of the page



4. If the ssid uu_staff is not available then select add and enter ssid name **uu_staff**
5. If the ssid uu_staff is present select it and then click on properties
6. Enter the other details as shown below :

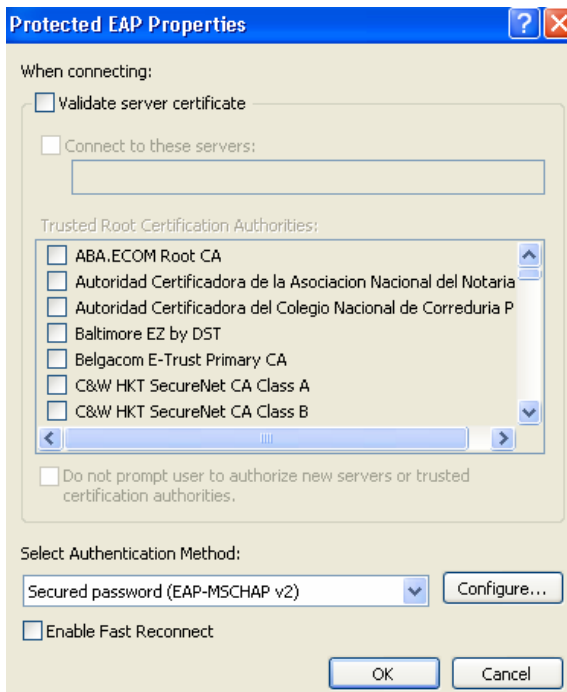


7. click the authentication tab and set the properties as below :

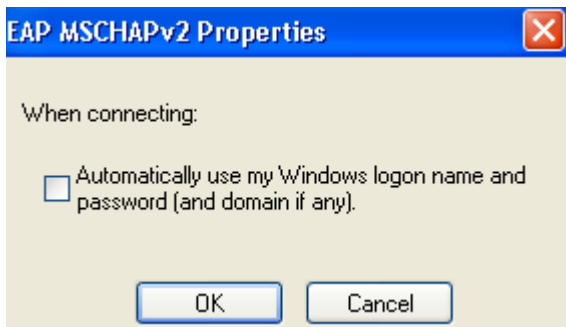


8. Select properties button beside eap type

9. Configure as shown



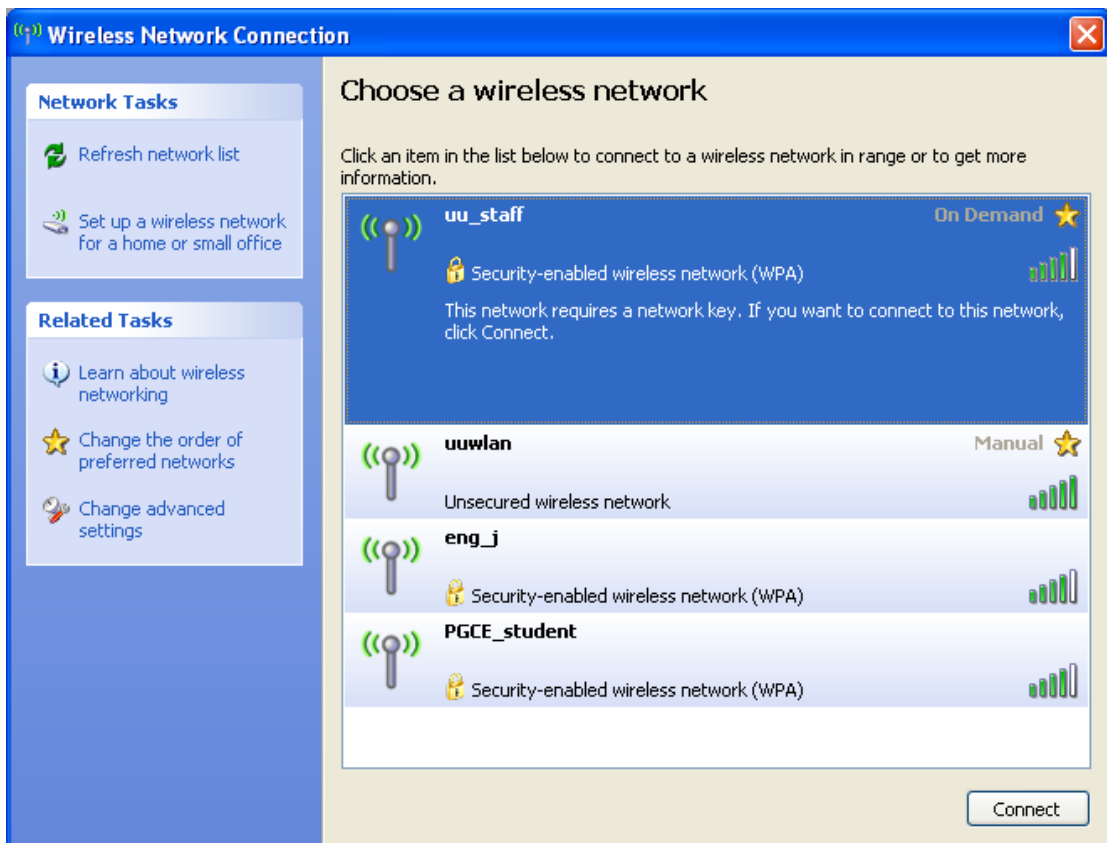
10. Select the configure button and set the properties as shown below



11. Click “OK” to accept and close all the open windows.

Logging onto uu_staff Wireless Network

1. Select Start, Connect To, Wireless Network Connections, View Wireless Networks
2. Select **uu_staff** and click connect

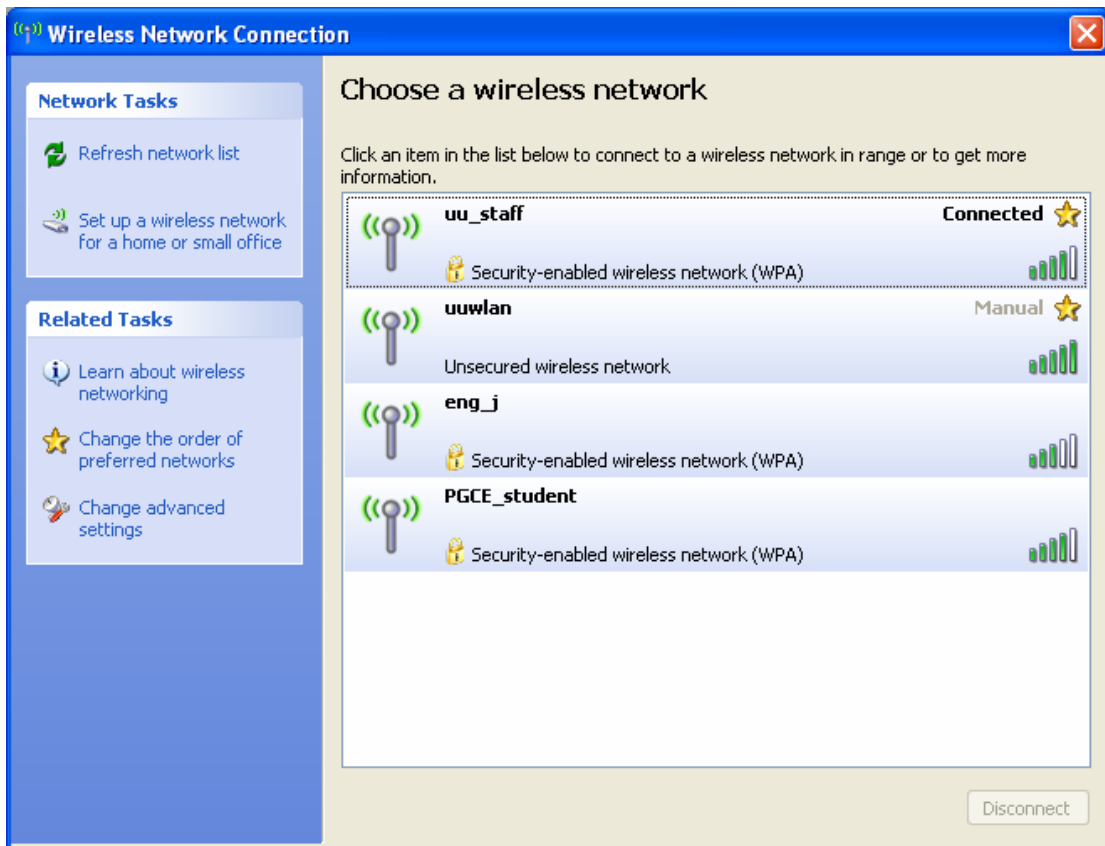


3. When prompted to **Enter Credentials**, enter your staff ecode for username and your original Netmail password for password. Leave Login Domain blank.

Appendix 1 (Account Information) provides details on how to obtain your original Netmail password.



4. When credentials are accepted, uu_staff will indicate that the machine is **Connected**.



5. You are now connected to the network. Your account details will be stored on the computer and the computer will use these stored credentials to log you on every time you connect to uu_staff.
6. Note : If you need to change you wireless password at any time, the stored credentials will need to be deleted from the registry. Follow procedure **Changing/Disassociating a uu_staff Wireless Password** for information on how to delete stored credentials. The next time you try to connect to uu_staff you will be prompted for the new username and password.
7. If you require your laptop to automatically log you onto the wireless lan whenever you are in range, then set the tick box in connection tab under uu_staff properties as shown below.

